

BARCLAYS LEAGUE DIVISION 2
SWINDON TOWN

Saturday 9th November-- 1991 Kick-Off 3.00pm

MAIN SPONSOR SEASON 1991/92

HI-TEC



MATCH SPONSOR
RICKARD KEEN & CO

MATCH DAY
MAGAZINE £1.20

TODAY'S MATCH SPONSOR

RICKARD KEEN & CO
Chartered Accountants

REGISTERED AUDITOR

Specialists in:

COMPANY TAX PLANNING

**INCOME TAX, CAPITAL GAINS TAX AND
INHERITANCE TAX PLANNING FOR INDIVIDUALS**

PERSONAL FINANCIAL PLANNING

BUSINESS PLANS, PROJECTIONS, BUDGETS AND

COMPANY FINANCIAL PLANNING

MANAGEMENT AND COMPUTER CONSULTANCY

AUDIT AND ACCOUNTANCY

9 Nelson Street, Southend-on-Sea, SS1 1EH

SOUTHEND-ON-SEA

Tel: (0702) 347771

Fax: (0702) 330951

**Authorised by the Institute of Charter Accountants
in England and Wales Chartered to carry on Investment Business**



WEBB ON TWO

pleasure to see Brett Angell reach first, 50 League goals and then 10 for the season in the same game with two fine headers and "Benji" get back on the goal standard with a typical (for him) swerved shot.

It all contrasted with the week previous against Oxford and demonstrated the way things go in football life.

Today we take on the team many regard as the best in the Division currently. The visitors have a wealth of experience in this division and fine individual players moulded effectively by Glen Hoddle who has built on the work of Lou Macari and Ossie Ardiles in an excellent way.

So, we are certain of a fine match at Roots Hall once again. I only hope that the North Bank is streaming out again with 10 minutes to go as they were on Tuesday as the match was won. Funny thing that - it used to be that fans expressed their displeasure for a bad performance by leaving early. Seems we can't win either way!

However, I'm sure everyone will be happy if we produce the same performance today as the other night and we witness as good a game as we did then - Here's to it.

Up the Blues

The fireworks resounded round Roots Hall on Tuesday night and to everyone's great enjoyment, we produced a display of some sparkle on the pitch before our own supporters - even if there were only 4,800 or so.

Those who came saw a fine game. Blackburn, especially in the front half hour posed problems with their good passing and the experience of their players in key positions. It spoke volumes for our players that they kept their wits about them and solved the problems that were set them.

To score three goals against Blackburn required high quality and those who saw them would testify that is just what they were. What a

**SOUTHEND
UNITED
FOOTBALL
CLUB**

SEASON 1991-92

Ground: Roots Hall

Telephone: 0702 340707

President:

N.J. WOODCOCK

Chairman & Managing Director

V.T. JOBSON

Vice Chairman & Commercial Director

J.W. ADAMS

Board of Directors

J. BRIDGE

J.N. FOSTER

D.M. MARKSCHEFFEL

R.J. OSBORNE

F. VAN WEZEL

Associate Directors

R.F. MOORE O.B.E.

W.E. PARSONS

Company Secretary

R.J. OSBORNE

Manager

D.J. WEBB

Coaching Staff

K. LOCK

D. GREAVES

M. FLANAGAN

Marketing Officer

D.J. DIBBLE

Catering Manager

H. STOBART

Hon Medical Officer

DR. A. K. SINHA

Sports Therapist

A. RAW

Assistant

K. CLARK

S.U.F.C. Telephone Services

Marketing 0702 332113

Shop 0702 435067

Soccerline 0839 66 44 44

Infoline 0839 66 44 43

Quizline 0839 66 44 23

Times expressed in this magazine are not necessarily those held by Southend United F.C.

COLLINSON FENCING CO LTD

INDUSTRIAL & FACTORY SECURITY FENCING & GATES

LARCH LAP, CHAIN LINK, CLOSE BOARD, RANCH TYPE -

IN FACT, ANY TYPE OF GARDEN FENCING

CHAIN LINK, CONCRETE, PALISADE & PANEL FENCING

MAIN CONTRACTORS TO BRITISH RAIL,

HM GOVERNMENT & LOCAL COUNCILS

"DISCOUNT AVAILABLE TO CLIENTS WHO PRODUCE THIS ADVERT"

STANNETTS, HIGH ROAD, LAINDON, BASILDON, ESSEX

Basildon (0268) 411671/414218

Blues One Stop Soccer Shop



"Me and my Blues Teddy Bear love the Blues".
Junior Strip and Bear at the Club Shop



"My Mate and I wear Blues Hi-Tec strip all the time. We bought them at the Club Shop of course!"



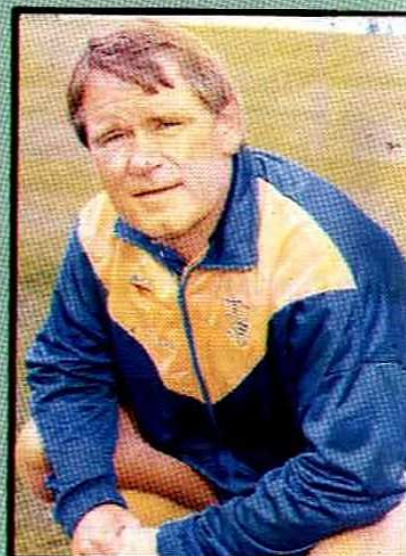
"My Dad says I look a proper Footballer in my Hi-Tec Track Suit. It was my birthday present bought from the Club Shop.



"If you can't fight wear a big tall" Blues Hats, Caps and Rugby Shirts for all ages at the Club Shop.



"Our gang all wear Blues gear from the Club Shop. Track Suits, Hats, Sweat Tops, Scarves, Rugby Shirts, Caps and many more items all at the Club Shop.



"It's not only the kids who think our Hi-Tec and Beaver gear is great - so do I!" Shall Suits, Track Suits and Shirts for all ages now at the Club Shop.

BLUES SHOP

Blues One-Stop-Soccer-Shop is open daily between 10.00am and 4.00pm on Monday, Tuesday, Thursdays and Fridays with 30 minutes closing for lunch.

The shop is NOT open on Wednesdays unless there is a Home Match.

MATCH-DAY OPENING IS AS FOLLOWS:

Saturdays 10.00am - 3.00pm and 4.45pm - 5.15pm

Evenings 10.00am - 4.00pm and 5.00pm - 9.30pm

News From Blues Two's & Juniors

South East Counties League with Danny Greaves

Southend Utd 5 Portsmouth 1

On Saturday 2nd November the young Blues played Portsmouth at Fords. We started extremely well when within the first minute Scott Ashenden put the Blues one-nil up. Then continuing from where he left off Steve Brown crossed the ball to Shane Jones to head the ball past the goalkeeper at the far post. 2-0 up within 5 minutes! Portsmouth then attacked causing a defensive error from which they scored. We then caused Portsmouth numerous problems and Gavin Grayburn turned and slotted the ball home to make it 3-1. Southend progressively pushed forward causing the very suspect Portsmouth defence problems. Then Steve Brown latched on to a bad back pass and bravely put the young Blues 4-1 in the lead and that is how it stayed until half-time. The second half the Blues attacked methodically applying much pressure on Portsmouth in which they nearly scored from a handful of chances. The young Blues hardly had to play in their own half through the whole of the second half, they did not however score until 10 minutes from time when Craig Davison curled the ball around the Portsmouth goalkeeper from 25 yards. Southend could have sat back on their lead but they continued to attack and were unlucky not to score again but the game ended 5-1 which is a very satisfying and well deserved result for the Young Blues.

OUR NEXT OPPONENTS

Saturday November 16th

West Ham (A)

K.o. 11.00am

Savill Road

Saturday November 23rd

CAMBRIDGE (A)

K.o. 11.00am

Queen's College

Young Blues in View



Michael Gonzagre

Known as "Gadget" and Big Bird, the strong young central defender comes from Canning Town where he attended Langdon Comprehensive School and represented both Newham Schools and Essex F.A. His Blue mentors are Peter Butler and Pat Scully and he hopes the future will see him a full professional for Blues.

Capital League Fixtures with Mike Flanagan

West Ham 2 Southend 3

On Thursday 7th November we played at Chadwell Heath. As a friendly the conditions weren't the best, but we managed to overcome the strong winds and play some good football. The Hammers led at half time by 1-0 after scoring from a corner midway through the first half. Shortly after the break they increased their lead with a shot past Simon Royce from inside the box. The Blues made a spirited first back after our opponents second goal. O'Callaghan scored our first from his free kick on the edge of

the box. Cagigao scored our second after Prior had flicked on a near post corner and the rout was completed when O'Callaghan scored his second from the penalty spot after Cagigao had been brought down by the goalkeeper. The final result, and a deserved one, a 3-2 victory to the Blues

OUR NEXT OPPONENTS

COLCHESTER

Tuesday 12th November

Essex Senior Cup,

at Layer Road K.o. 7.30pm

CRYSTAL PALACE

Tuesday 19th November

Roots Hall, K.o. 7.45pm

RING INFO-LINE 0839 66 44 43 FOR WEEKLY DETAILS

OUR OPPONENTS!

Focus on

Swindon Town

by Kevin O'Donnell

Under manager Glen Hoddle Swindon have made an encouraging start to the 1991-92 season and are among the early pace setters. Not only have the results been good so far but the style of the club's play has received numerous compliments as well, perhaps not surprisingly in view of the manager's background as one of the game's more cultured players.

Hoddle took over the reins from another former Tottenham Hotspur player, Osvaldo Ardiles, in April of this year who in turn became manager of Newcastle United. Swindon were not enjoying a successful season but they did just enough to avoid relegation by finishing two places and two points ahead of West Bromwich Albion.

That season had started with a great deal of controversy following the events during the close season in 1990. The clubs had already received a shock during January of that year when their then Chairman Brian Hillier and former manager Lou Macari were charged by the Football Association in connection with unauthorised betting by the pair on their own team to lose a cup tie at Newcastle. In February the F.A. banned Hillier for 6 months and fined Swindon and Macari.

On the pitch the team were making the 1989-90 season the most successful in the club's history and they eventually finished fourth in Division Two to reach the end of season play offs for promotion to Division One. In the semi-finals Swindon beat Blackburn Rovers 2-1 home and away to go through by a 4-2 aggregate to a Wembley final against Sunderland.

Swindon had already enjoyed success at Wembley Stadium when as a Third Division club they defeated Arsenal 3-1 after extra time in 1968-69. The play off final brought greater glory as before 72,873 fans Swindon beat Sunderland 1-0 with a goal from Alan McLoughlin to gain promotion to Division One for the first time ever.

That was on May 28th, 1990 but only ten days later the Football League stunned the club by relegating them from the First to the Third Division as a result of a hearing at which Swindon admitted 36 breaches of League rules, 35 involving irregular payments to players. The League announced further charges would be made against various individuals involved in the deals which had taken place over several seasons.

Swindon issued injunction proceedings in the High Court to set aside the decision but in the meantime the Football League decided to promote Sunderland to Division One in place of Swindon and Tranmere Rovers to Division Two, both clubs being the losers in the respective play off finals.

That in itself was a controversial decision angering the clubs who had already been relegated and who argued that they should have been reinstated instead. Further controversy arose following remarks by the PFA Chief Executive Gordon Taylor

about over-reaction by the League and allegations that most First Division clubs were in breach of other rules.

Swindon had appealed to the F.A. to overrule the League. They agreed to abide by the decision of the F.A. Appeal Panel and withdrew the High Court proceedings. On July 2nd the F.A. reduced Swindon's punishment by allowing them to remain in Division Two meaning that Tranmere Rovers were "relegated" back to Division Three through no fault of their own. Understandably this caused a great deal of ill feeling especially as the Birkenhead club had sold a large number of season tickets to fans expecting to see Second Division football.

Later in the month the League ordered Swindon to pay £67,000 additional transfer fees in respect of some of the deals subject to the investigation. Not surprisingly the off the field events had a negative effect on the team and no doubt contributed to Swindon's poor form last season. Now the club hope to have put all the controversy behind them as they look forward to better times ahead.

The recent events are certainly at odds with the history of a club whose greatest achievement to date is the League Cup win already mentioned. The club was formed around 1881 and became founder members of Division Three in 1920.

Before that Swindon had reached the F.A. Cup

Meet The Manager Glen Hoddle

One of the game's most gifted performers, Glen, in his first Managerial post has ensured the "Robins" have continued to be one of the Division's top teams.

On the field as a "Sweeper" Glen has already demonstrated his versatility and experience, whilst also proving shrewd managerial skills away from the playing arena.



WINES - BEERS - SPIRITS WINE VILLA (Wholesale)

K.C. & L.R. BAKER

20 TERMINAL CLOSE,
SHOEBURYNESSE, ESSEX

Telephone: (0702) 292782/295132

Semi-finals twice in 1910 and 1912 but that apart their fortunes followed a similar path to Blues as they remained in Division Three (south) throughout its existence until Division Three and Four came into being in 1958. Five years later Swindon won promotion to Division Two as runners up to Northampton Town but their first stay in Division Two lasted only two seasons. In 1968-69 runners up spot in Division Three saw them back up again.

However, after initial success including winning the Anglo Italian Cup in 1969-70 Swindon were relegated again in 1974 and after eight seasons in Division Three suffered further relegation to Division Four in 1982.

Lou Macari took over as manager in 1984 and under his guidance Swindon fought their way back up to Division Two with consecutive promotions in 1985-86 and 1986-87. Their Fourth Division championship win in 1986 was achieved with a record 102 points.

Macari left to manager West Ham United in 1989 but Osvaldo Ardiles continued the work until the club ran into the problems already described.

Blues had met Swindon on many previous occasions although not since 1985-86 when the clubs drew 0-0 at Roots Hall and Swindon won 2-1 at the County Ground, their team on that occasion including Chris Ramsey and Paul Roberts who joined Blues a few seasons later. Ramsey scored the winner for the home team with a diving header from a free kick awarded against keeper Stannard for taking too many steps. Although Blues lost they did at least score their first League goal at the County Ground in eight matches, Shane Westley the man on target.

Despite their poor League record at the County Ground, Blues did achieve a great victory there in 1968-69, when as a Fourth Division Club they won 2-0 in the F.A. Cup in the season which Swindon won the League Cup and promotion to Division Two.

THE PLAYERS

COLIN CALDERWOOD: The only surviving member of the Town's Fourth Division championship-winning side of 1985/86. Colin has made over 250 League and Cup appearances since being signed for just £27,500 from Mansfield Town prior to that record-breaking campaign. He was restricted to 23 games last season when he suffered a knee ligament injury in mid-September.

SHAUN CLOSE: Has made just eight full League appearances since a £70,000 move from AFC Bournemouth almost two years ago and has scored only once for the club - in a Rumbelows League Cup tie against Darlington last October. Went to Dean Court in March 1988 from Tottenham, where he began his career as a trainee.

STEVE FOLEY: Last season saw Steve record his best appearance tally for Swindon since arriving from Sheffield United in 1987, being absent from the Town's starting line-up on just six occasions. He scored seven



TOP ROW: Colin Calderwood, Adrian Viveash, Richard Green, Fraser Digby, Shaun Taylor, Nicky Hammond, David Mitchell, Nestor Lorenzo, Steve White.

MIDDLE ROW: John Trollope (Youth Team Manager), Nicky Summerbee, Darren Hall, Paul Trollope, Edwin Murray, Fitzroy Simpson, Shaun Close, Steve Foley, Martin Ling, Andy Rowland (Reserve Team Manager).

FRONT ROW: Kevin Morris (Physio), Paul Hunt, David Bennett, Ross MacLaren, Duncan Shearer, Glenn Hoddle (Manager), John Gorman (Asst. Manager), Tom Jones, David Kerslake, Micky Hazard, Eddie Buckley (Kit Manager).

SWINDON TOWN

goals, including a career-first hat-trick against Leicester City. An apprentice at Anfield, Steve did not make his League debut until joining Fulham on loan in a 1983/84.

NICKY HAMMOND: The consistency of Fraser Digby has kept Nicky in the shadows for most of the four years since he arrived on a free transfer from Arsenal. His six outings last season were the first since 1987/88, during which time he has twice recovered from a broken leg. An apprentice at Highbury Nicky made his League debut in September 1986, while on loan to Bristol Rovers.

MICKY HAZARD: Signed from Portsmouth for £130,000 last September. Micky inherited the Town's number four shirt from the transferred Alan McLoughlin. Made 38 League and Cup appearances, scoring eight goals - his best tallies since 1981/82 when he was an up and coming star at White Hart Lane. He won both F A Cup and UEFA Cup medals with Tottenham before joining Chelsea for £300,000.

TOM JONES: Has missed just five League games since arriving at the County Ground from Aberdeen for £80,000 in September 1988. Formerly an apprentice at Chelsea, he was released in 1983 and joined Farnborough Town, moving on to Weymouth in 1986. Filled in at right-back for the absent David Kerslake on five occasions last season. Tom has not scored since September 1989.

DAVID KERSLAKE: A £110,000 signing from Queens Park Rangers in November 1989. David has struggled to gain a regular first-team spot in more than six years at Loftus Road. He made his first team debut there in a UEFA Cup tie against Partizan Belgrade in 1984. Gained England honours at schoolboy, youth and Under-21 levels. All his appearances for Swindon have been at right-back.

MARTIN LING: Slightly-built midfielder now in his second spell at the County Ground, having rejoined the Town from Southend United for a small fee during the summer. Began his career with Exeter City before signing for Swindon in July 1986, but after just two League appearances moved on to Roots Hall 93 days later. Spent a month on loan with Mansfield Town last season.

ROSS MacLAREN: About to commence his 12th season as a professional and his fourth at Swindon. Absent only once during the last two campaigns, through suspension. Ross normally plays just in front or just behind the back four. With Shrewsbury for five years, he joined Derby in 1985 for £67,500 and picked up a Second Division championship medal there two years later.

DUNCAN SHEERER: Has maintained an impressive 'goal every other game' average since making his Football League debut for Chelsea in February 1986. A club-record £230,000 signing from Huddersfield Town in June 1988, Duncan has recorded tallies of 16, 27 and 23 for Swindon. Arrived in London from Highland League club Inverness Clachnacuddin in November 1983.

FITZROY SIMPSON: Signed as a trainee in July 1987, making his League debut 30 seconds from the end of the Town's visit to Shrewsbury in December 1988. Has since struggled to show the

potential that his early displays promised. Made his full appearances last season, wearing every outfield shirt except the number two, and scored four times.

NICKY SUMMERBEE: Started a game for the first time in the Town's final fixture of 1990/91, at Port Vale and made seven earlier appearances as a substitute. Nicky has a bright future and a good football pedigree, as his father, grandfather and great uncle all had careers in the Football League. His father is the former Swindon, Manchester City and England forward Mike.

SHAUN TAYLOR: A £200,000 signing from Exeter in July, Shaun was City's captain and Player of the Year in their Fourth Division championship-winning side of 1989/90. Came into League football late, being 23 when he arrived at St James' Park from Western League club Bideford Town. Strong and durable central defender who has missed just two games in the last three seasons.

ADRIAN VIVEASH: Progressed through the ranks at the County Ground, starting his career as a winger. Has now slotted into a back-four position and featured at left-back in the latter part of last season. Made 27 full appearances after the briefest of League debuts against Middlesbrough last September, when he was substituted after only 21 minutes.

STEVE WHITE: Now approaching the veteran stage, Steve was a free transfer signing five years ago from Bristol Rivers, where he began his League career in 1977. Moved to Luton and Charlton for fees totalling £350,000 between his two spells in Bristol. Troubled by injury last season, but still claimed eleven goals, five of which came in January.

PLOUGH HOUSE MOTEL

BULPHAN, ESSEX.
Tel: 0375 891592

80 Bedrooms, banquet suite, bars,
dining rooms, swimming pool and
sports facilities.

Ample parking. Set in 13 acres of
landscaped water gardens, all
available to guests and residents.

Qualified staff. 30 minutes Southend.
5 miles M25. On the A128.

DEDMAN

Property Services

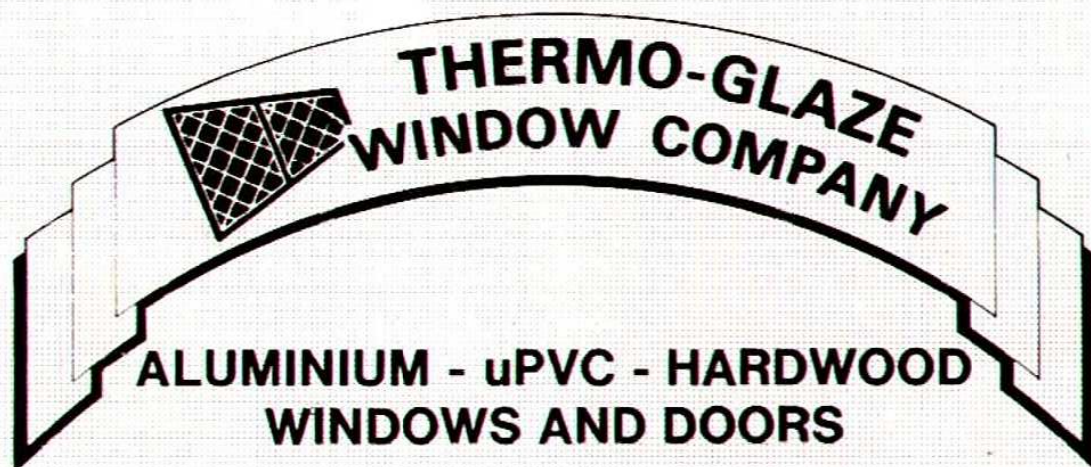
THE RESULTS SERVICE

**DEDMAN
SOLD**

**DEDMAN
LET**

**DEDMAN
ACQUIRED**

See our advertisement in Yellow Pages



BEAUTIFUL PATIO DOORS

TRADITIONAL AND
MODERN DOORS

FAST FITTING
GUARANTEED

FREE QUOTE
NO OBLIGATION

***MAINTENANCE FREE
uPVC REPLACEMENT
WINDOWS***

Head Office: 30 BRITANNIA COURT
Showroom: BURNT MILLS IND. ESTATE
BASILDON, ESSEX SS13 1EU
Tel: BASILDON 729044

Reg. Office: 343 VICTORIA AVENUE
Showroom: SOUTHEND ON SEA
ESSEX
Tel: SOUTHEND 63391/2

London Office: 598 GREEN LANE
Showroom: GOODMAYES, ILFORD
ESSEX IG3 9SU
Tel: 01-597 5190



Here's Looking At Two

with Soccerline's Nick Alliker

BORO' KEEP BATTLING BLUES AT BAY

Southend United's fine away form continued at Ayresome Park last weekend against Middlesbrough; the current Division Two leaders.

In the first ever meeting between the two sides the points were shared at the end of the day and Boro' maintained their undefeated home record. Blues were given the perfect start when Brett Angell knocked in his eighth goal of the season after just eight minutes. And the homeside then failed to capitalize on an excellent opportunity to strike back with a 15th minute penalty. Gary Parkinson's tame effort was stopped by the feet of Paul Sansome. Being a goal up defending was the order of the day in the second half, but Stuart Ripley pierced the Blues net on 55 minutes with a 20 yard stunner. Steve Tilson had two great chances just before the final whistle - one was superbly saved, the other went inches wide - but for those who braved the biting wind, a draw was about the right result. That kept Boro' on top and moved Southend into tenth. Swindon moved into second place with Glen Hoddle's men beating Ossie Ardiles' Newcastle. The former Spurs team mates, saw Town take the lead just before the interval with captain Colin Calderwood firing in a close range shot. Steve White netted Swindon's second two minutes from time and, despite Gavin Peacock pulling one back for United on the final whistle, it was the Wiltshire side who had their sixth victory at home and a further three points. Cambridge are third, despite only managing a goalless draw at home to Bristol City.

Charlton Athletic slipped to fourth, following a



Brett Angell - On target at Ayresome



Paul Sansome - Another "spot-on" save

1-0 away defeat at Grimsby Town. The Mariners halted Athletic's run of seven games undefeated, with Gary Childs striking after just 12 minutes. Ipswich and Leicester, both on the fringe of the top positions, drew 2-2 at Filbert Street. All the scoring was in the second period. At the bottom, Bristol Rovers took a rare point, but can take heart in the knowledge that it was a thrilling 3-3 draw with Port Vale. It was a 25 yard free kick from the silky boot of Rovers Justin Skinner who got the late leveller.

Brian Horton's position as Oxford boss looks more precarious than ever after his side went down 1-0 at the Manor against Barnsley. The visitors strike came after 2 minutes with Neil Redfern on target having been set up by Gareth Williams.

Plymouth moved off the bottom with a rare win at home to Wolves. Dwight Marshall hitting home in the first half.

An extraordinary match at Ewood Park, Blackburn where Rovers beat Brighton by one goal to nil. Two sendings off and two penalties transformed this lacklustre encounter into a nightmare for Albion.

In the morning kick off at Roker Park, Sunderland won 3-1 against Watford while Millwall drew 1-1 with Portsmouth.

Finally Tranmere Rovers got their first ever league win at Derby County, which earned them the Barclays Performance of the Week award. John Aldridge, with his 21st goal of the season secured the 1-0 win in the first half.

Enjoy the match.

MAGNATROL

Control Systems Limited
ENVIRONMENTAL CONTROL, PROCESS CONTROL
ELECTRICAL SERVICES, MECHANICAL SERVICES
47 SOUTHEND ROAD, HOCKLEY, ESSEX, SS5 4PZ

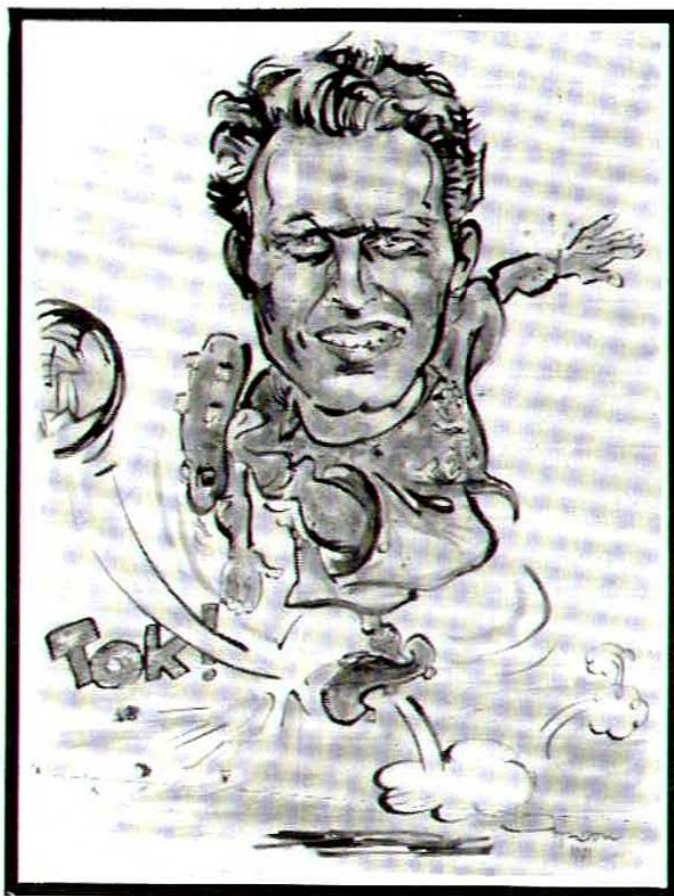
Telephone: (0702) 206613

Facsimile: (0702) 203579

32

Facts & Views From Spencer Prior

1. NAME: Spencer Justin Prior
2. BIRTHDAY: 22nd April 1971
3. BORN AT: Rochford
4. WEIGHT: 13st
5. HEIGHT: 6' 2"
6. WENT TO SCHOOL AT: Green-sward - Hockley
7. FAMILY: Parents - Sister
8. LIVES AT: Hockley
9. PETS: 2 cats
10. FAV. FOOD: Italian/Mexican
11. WORST FOOD: None really
12. FAV. DRINK: Guinness
13. BEST TV SHOWS: Cosby Show/ Harry Enfield
14. WORST TV SHOWS: Beadles About
15. BEST MUSIC: House/Reggae/ Prince
16. WORST MUSIC: Opera
17. BEST RADIO STATION: Kiss FM
18. FAVOURITE D.J.: Steve Jackson
19. CAR: Ford Orion
20. AFTERSHAVE: Armani
21. BEST FILM: Escape from New York/Home Alone
22. BEST ACTOR: Kirt Russell
23. BEST ACTRESS: Julia Roberts
24. MOST FAMOUS PERSON MET: Alan Raw
25. PLAYER MOST ADMIRERD: Benji & Terry Butcher
26. MOST DIFFICULT OPPONENT: Clare (girlfriend) & getting Tilly (room partner) out of the bathroom
27. WORST INJURY: Broken Leg
28. PREVIOUS CLUBS: Whitecaps
29. PLAYING POSITION: Centre-half/ Centre-forward
30. BEST GOAL: Bournemouth away last year!!
31. MOST MEMORABLE MATCH: Spurs at home (Rumbelows Cup)
32. BIGGEST INFLUENCE ON CAREER: Kevin Lock/Paul Heffer/Parents



Pub Talk

THE EXCLUSIVE
"BACCHUS" NIGHT CLUB
OVER 25'S ONLY
SMART DRESS

ALEXANDRA HOTEL

Alexandra Street, Southend-on-Sea, Essex
TELEPHONE (0702) 345934 / 339804

THE ALEX
FOR BED & BREAKFAST
VERY REASONABLE RATES

Maidstone have not made many headlines since coming into the Football League though have held their own and in fact reached the playoffs two season ago. Much-travelled goalkeeper Iain Hesford has not made many headlines either in a career that has taken him successively to Blackpool, Sheffield Wednesday, Notts County, Sunderland, Hull and now to Maidstone. Son of pre-war Huddersfield goalkeeper Bob Hesford, Iain never quite fulfilled the high expectations that were held out for him when he gained an England Under 21 cap in 1982. Those who have seen him play may say that at nearly 15 stone his weight is not always an advantage to him.

He has however been a good servant to the clubs he has played for and Maidstone did well to pick him up on a free transfer during the summer. Now both Iain and Maidstone are in the record books. Why? In case anyone didn't notice, goalkeeper Iain netted what proved to be the matchwinner in his side's recent Fourth Division win over Hereford, his long clearance deceiving his opposite number Tony Elliott as it bounced.

Now Iain has joined the select list of goalkeepers who have scored as a result of clearances from one end of the field to the other. Only a handful of goalkeepers have achieved this in senior football. Pat Jennings and Peter Shilton are two household names who have done so. Former Bristol City goalkeeper Ray Chaskley is a lesser known name who has done so and of current Football League goalkeepers Coventry's Steve Ogrizovic and Grimsby's Steve Sherwood

(in his Watford days) have done so.

There are of course goalkeepers who have netted from the penalty spot in their time, amongst them Chesterfield's Arnold Birch between the wars and Manchester United's Alex Stepney in the 1970's. Then there have been those who have been injured, moved into the forward line and scored. Manchester United's Irish International Harry Gregg once scored with his arm in a sling and Reading's Arthur Wilkie in a game in the 1960's actually scored twice in a game after moving up into the front line.

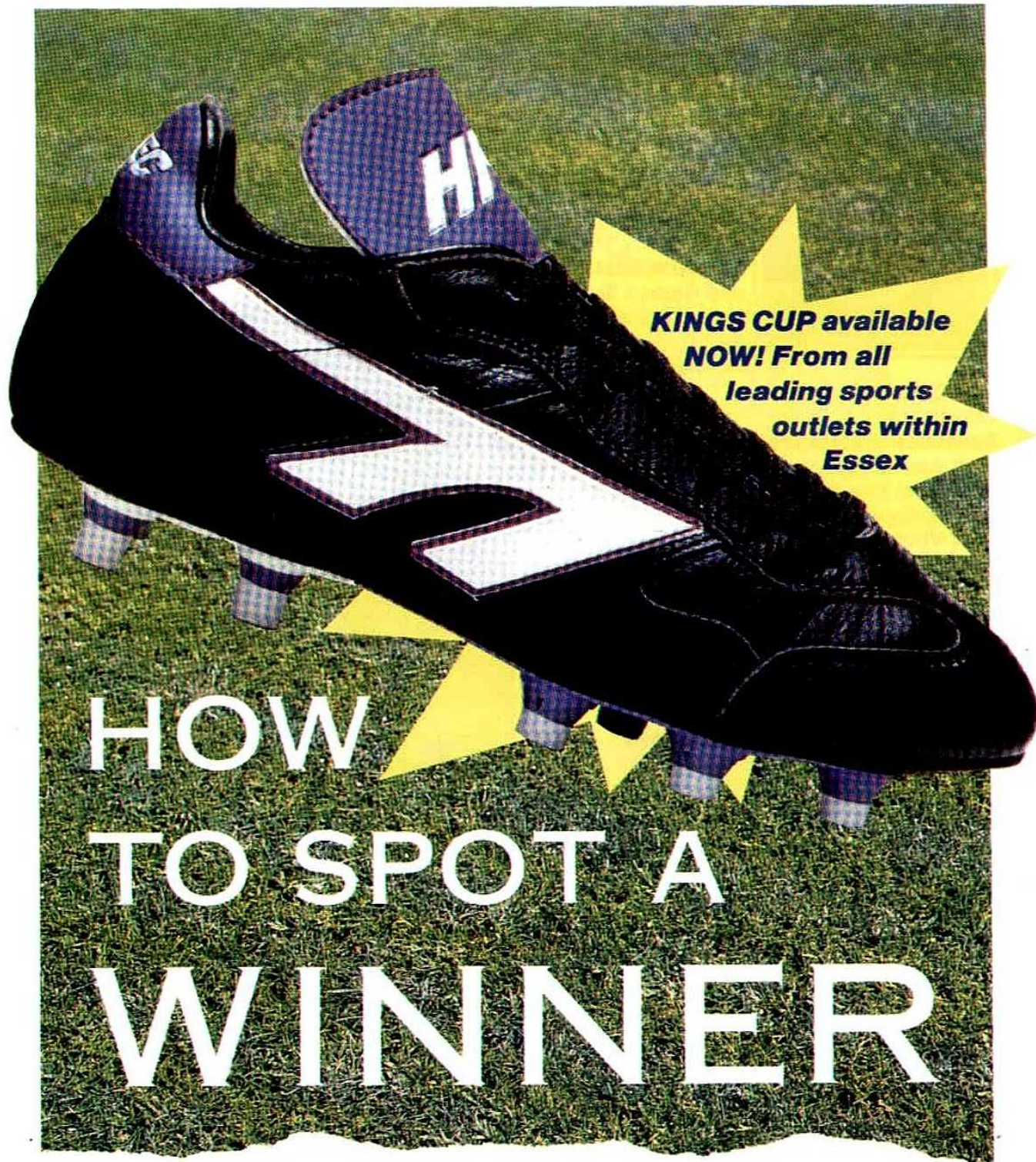
Of course whenever a goalkeeper scores it is in unusual circumstances and this is what adds to the excitement of it all. On days when there are high winds, particularly if the pitch is bad it is however always worth trying a long kick from the edge of the penalty area with strikers ready to follow the ball in case of slips or fumbles. It may not be the prettiest of football, but it does bring excitement. Anyone who has watched football over a long period may not have seen a goalkeeper score, but they have almost certainly seen a long clearance from a goalkeeper create confusion in the opposing goalmouth. The other side of the coin, however, is that goalkeepers need to be wary of advancing too far from their goal when a long clearance is coming up from their opposite number.

Inevitably for the rest of this season at least wherever Iain Hesford appears there will be discussion of his recent goalscoring feats and maybe a roar of expectation when he heaves himself into a long clearance. Maidstone's gates are pitifully low at present. It would be good if some of the missing fans go along to see whether he can do it again.



*The Ideal Venue For Your Wedding,
Conference or Function
The Crest Hotel has 6 Suites which
can cater from 20 - 240 people*

Call Alyson - 0268 533955



**KINGS CUP available
NOW! From all
leading sports
outlets within
Essex**

**HOW
TO SPOT A
WINNER**



OFFICIAL CLUB SPONSOR & UK'S NO1 SPORTSWEAR BRAND



Name: Stuart Fowler
Occupation: School Student
Length of Time Supporting Southend: 7 years
The First Southend Game I Saw: Blues v Wimbledon '84

Favourite Player

(Past): Shane Westley, Paul Clark, David Crown

Favourite Players (Present): Peter Butler, Brett Angell, Paul Sansome, Steve Tilson

Best Goal I've Seen By A Southend

Player: Steve Tilson v Grimsby Dec '90

Best Visiting Team I've Seen At Southend: Tottenham (Littlewoods Cup)

Best Goal I've Seen By A Visiting Player:

A Kennedy for Watford (Cup 2nd Leg '91)

Favourite Sports Personality: Jimmy Greaves and Graham Gooch

International Figure I'd Like To Invite To Southend: Pele

Favourite Feature In The Southend

Programme: 32 Facts and Views

New Feature To Improve The Programme:

Where are they now? (past players)

My All Time Favourite Team:

- 1 - Paul Sansome
- 2 - Dean Austin
- 3 - Chris Powell
- 4 - David Martin
- 5 - Shane Westley
- 6 - Patrick Scully
- 7 - Andy Ansah
- 8 - Peter Butler
- 9 - David Crown
- 10 - Ian Benjamin
- 11 - Brett Angell
- 12 - Steve Tilson
- 14 - Paul Clark

Our next Fan-File features:
RICHARD BAKER

If you would like to appear here send your answers and a passport photo to:
Fan File S.U.F.C.
 Roots Hall, Southend, Essex

VAUXHALL

Once driven, forever smitten.



NETWORK Q

NEW Used cars like new

USED

PART EXCHANGE

FULL FINANCE FACILITIES

AVAILABLE

(WRITTEN DETAILS ON REQUEST)



VAUXHALL
Motability



JESSUPS

SOUTHEND (0702) 343344

33-41 MILTON ROAD, WESTCLIFF-ON-SEA, ESSEX

The *HI-TEC* Challenge

Answer all the questions below. Send your answers on a post-card to: Blues Hi-Tec Challenge, SUFC, Roots Hall, Southend-on-Sea, Essex.

First all-correct answer wins a Hi-Tec Prize

HALF-TIME QUIZ No: 11

1. Who were two Englishmen who played in Monaco's 1988 French League Championship team?
2. What are the colours of Hearts?
3. How many points are awarded for an away win on the football pools?
4. What is the link between the first European Cup Final and T.V.'s 'It's a knockout'?
5. What is the English translation of the German term Eintracht?
6. Which Scottish club signed Roy Aitken from Newcastle in August?
7. Who are the shirt sponsors of Everton?
8. In which year did Watford reach the F. A. Cup Finals?
9. What was Peter Reids first club?
10. Which former World Cup player was appointed physio of Northwich Victoria earlier this season?
11. Can you name 3 one-time Scunthorpe United players who went on to captain England?
12. On which England club's colours did Juventus base their black-and-white striped jerseys?
13. Which Sky TV presenter became assistant-manager of Aston Villa during last summer?
14. Who scored Newcastle's goal in the 1976 League Cup Final?
15. Can a football pitch be square?

And don't forget Blues Quick-fire Phone Quiz each and every day. Simple general knowledge questions.

WIN A CASIO T.V. EACH WEEK.

Easy to play, great to win 0839 66 44 23

(Calls charged at 5p per 9 secs. cheap rate - 5p. per 7 seconds at all other times)

INSIDE THE HALL

INTRODUCING SOUTHEND UNITED'S FAR POST RESTAURANT



FULLY LICENSED
with extensive
a la Carte Menu

PHONE
FOR
BOOKING

**0702
351403**

BUSINESS CLASS LUNCHES
EVERY WEEK DAY
£9.95 inc. V.A.T.

**FAMILY SUNDAY
LUNCH £9.95**
1/2 price for kids
with free Coke

**FREE PARKING
FOR 500 CARS**

OPENING HOURS

Monday - Friday	12.00 - 3.30pm
Wed/Thur/Fri	6.30pm - 11.00pm
Sat - 6.30pm - 11.00pm	Sun 12.00 - 4.00pm

CHRISTMAS FAYRE MENU
£12.95 per person
Lunch & Evenings

M. SHULTON
12 ALEXANDRA STREET
SOUTHEND-ON-SEA SS1 1BU
Telephone: (0702) 332139/614327

**CONGRATULATE
SOUTHEND UNITED
ON THE LAUNCH OF THE
FAR POST RESTAURANT**

**SUPPLIERS OF FRUIT & VEGETABLES
TO THE CATERING TRADE**

**IF YOU DRINK
DON'T DRIVE 'PHONE**

33-44-55

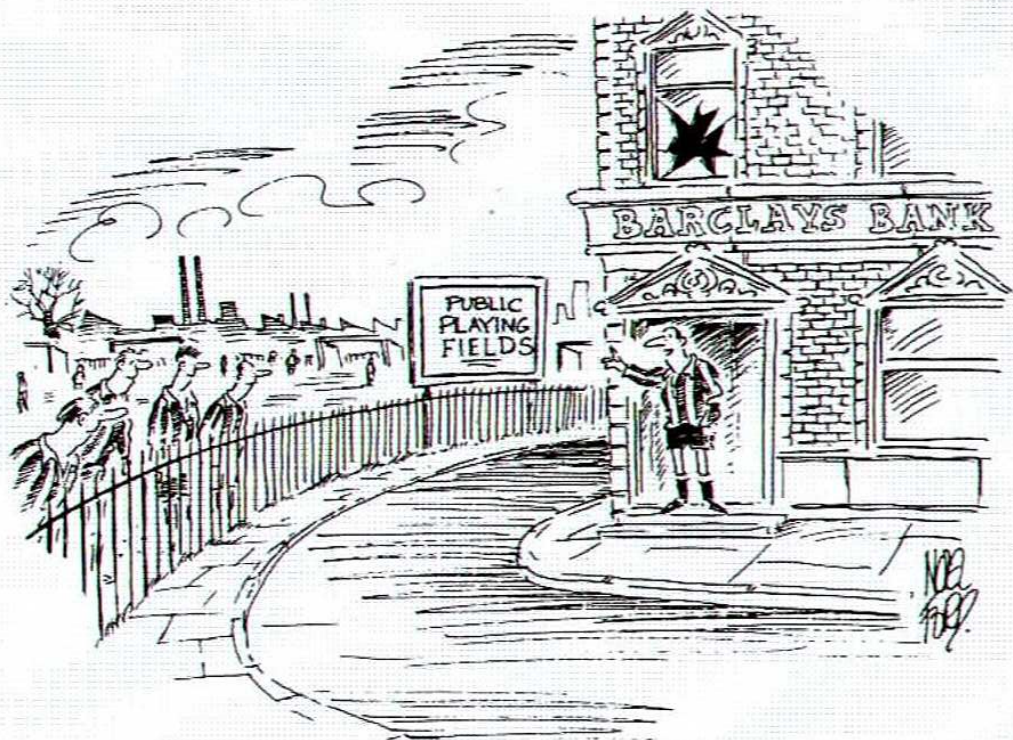
AC

**RADIO CABS
24 HOUR SERVICE
Tel: 348678/335433**

Weir House
LIMITED

Reproduction Furniture
- Oak, Mahogany, Yew -
Upholstery & Re-upholstery
Bar Seating etc.

Showroom, Office & Factory
Unit 5,
Airbourne Industrial Estate
arterial Road, Eastwood
Essex SS9 4EE
Tel: Southend-on-Sea 0702 511388
Fax No.: 0702 522354



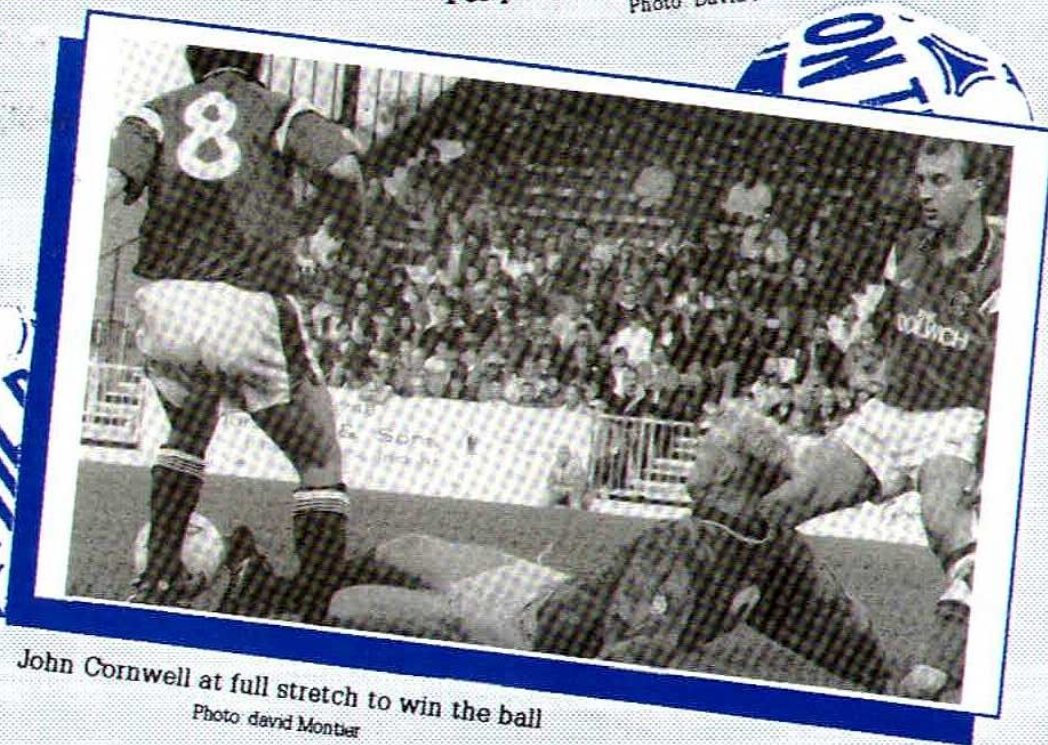
*'The manager will be delighted to discuss
more comprehensive insurance for the club and, yes we CAN have our ball back.'*

+++ YOU'RE
BETTER OFF
TALKING TO
 **BARCLAYS**

BLUES ON



Peripheral vision personified by Patrick!
Photo: David Montier



John Cornwell at full stretch to win the ball
Photo: David Montier



Official Suppliers

90 minutes

**MAKE IT
YOUR GOAL
EVERY
WEDNESDAY**

65p

**DON'T MISS OUT
ON OUR SIZZLING
SUBSCRIPTION OFFER
(SEE OVERLEAF)**

90minutes

BRITAIN

**ALL THE
HOT NEWS
& CRUCIAL
VIEWS**

**- SUPERLEAGUE:
WE BRING
YOU THE
LATEST
DEVELOPMENTS**

PLUS

**90 MINUTES
LIVE**

AT THE BEST GAMES - FANS COMMENTS!

PLUS

**EXCLUSIVE
INTERVIEWS
& PROFILES**

**EVERY
WEDNESDAY
ONLY
65P**



**IT
ALL HAPPENS**

90minutes

TAIN'S FASTEST GROWING SOCCER WEEKLY

AND THAT'S OFFICIAL

PLUS

THE FASTEST, MOST FURIOUS ACTION IN AND AROUND THE GAME.

PLUS

KICK BACK YOUR CHANCE TO LET RIP.

IT HAPPENS IN 90 minutes

UP TO DATE STATISTICS - THE FACTS. EVERY WEEK.

7 DAYS FOOTBALL DIARY WHAT TO SEE... WHERE TO SEE IT!

REMOVE FROM PROGRAMME • CENTRE PULL OUT • PLEASE REMOVE FROM PROGRAMME • CENTRE PULL OUT



IN ASSOCIATION WITH

Southend United F.C.

are pleased to offer all our supporters the opportunity to subscribe to
90 Minutes Soccer Magazine at a special rate,

AND THAT'S NOT ALL....

SIZZLING SUBSCRIPTION OFFER FREE CLUB MEMBERSHIP

When you send us your subscription fee, **90 Minutes** will pay for you to join
Southend United FC this season.

However, if you're already a member, **90 Minutes** will pay your £5 membership for
next season!

Simply complete the form below and rush it to us. (If you haven't read a copy of **90 Minutes**
yet, why not try it out first? Order a copy from your newsagent today)

I would like to
subscribe to 90 Minutes Soccer Magazine.
I understand I will receive 50 issues sent directly to my
home address for the special price of £30.50. I enclose a cheque/PO
for £30.50 made payable to (please tick appropriate box)

Dennis Publishing Ltd ☐ OR, Please debit my Access ☐ Visa ☐

Card No: _____

Expiry date: _____

Account Name: _____

Signature: _____

Please send the issues to:

Name: _____

Address: _____

Postcode: _____

Please put this coupon in an envelope and
send it to:

"90 Minutes" Subscription Offer
C/O David Dibble

Southend United FC

**Roots Hall Football Ground, Victoria Avenue,
Southend on Sea, Essex SS2 6NQ**

Please tick:

☐ I wish to join Southend United Football Club this season.
Please rush my membership to the above address.

☐ I'm already a member of the Club and would like
90 Minutes to pay £5 for my membership next season.

My membership No. is: _____

(Please allow 28 days for delivery)

(please insert)

SOU 91

This coupon is valid for use until 20th March 1992

PLEASE CUT OUT



THE BALL

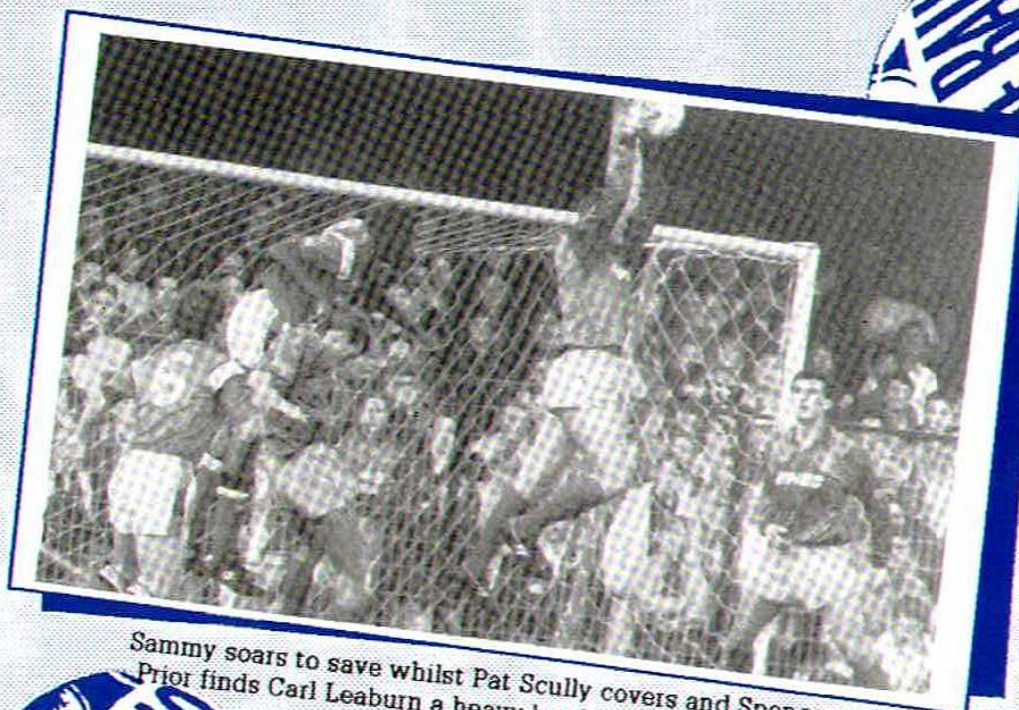
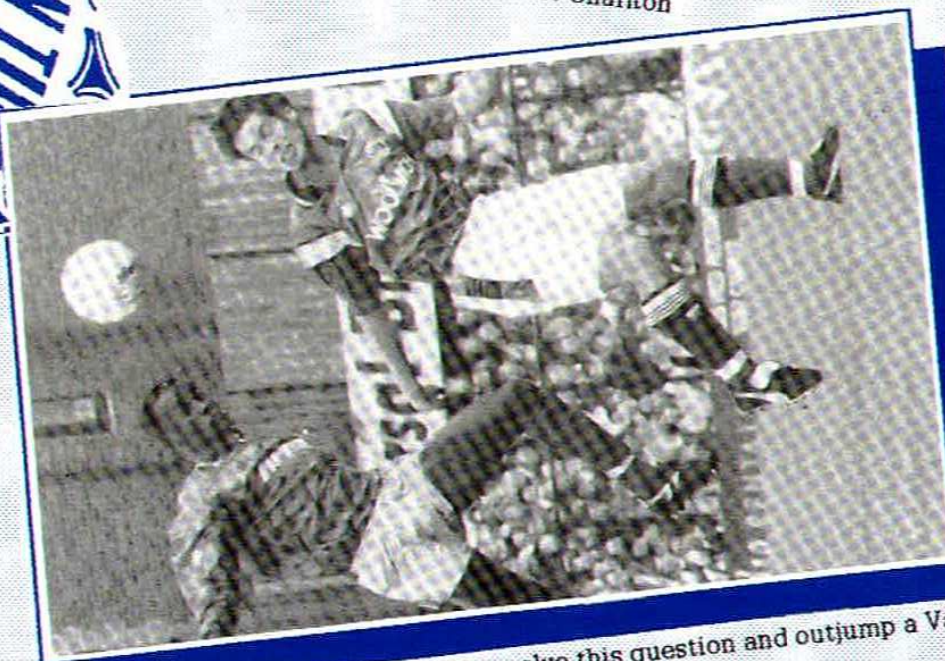


Photo David Montier

Sammy soars to save whilst Pat Scully covers and Spencer Prior finds Carl Leaburn a heavy burden against Charlton



The Ansah flies to solve this question and outjump a Valiant
Photo: David Montier

of Football Boots to S.U.F.C.



BLUES IN THE COMMUNITY

*..... with
Frankie Banks*

The weather is certainly getting much colder, winter woolly weather. Things are ticking over very nicely on the Community Front. Saturday Team exercise is still showing a great deal of interest and we are having to take double bookings on most of these home games.

My next venture as far as our OAP's are concerned is to take a party of 50 or so up to London and take in a show. This will probably take place at the end of November. So if you are interested don't hesitate to ring me on Southend 340707. The cost will be approximately £7.00 per head.

I am also trying to arrange a Miss Southend United Beauty Contest. I know we have held these in the past but I want to try something a little bit different with perhaps the heats and finals taking place in some of our local Night Clubs. So if any of you girls are interested perhaps you could give me a ring with all your details. Last but not least we have a Poppy Day Collection today. I hope you will all give generously. A lot of us I guess forget about these things but Fund Raising is becoming more and more difficult these days, but this is for a very good cause.

Thanks. See you soon.

Blues Community welcomes
our Saturday Team
WOODSIDE COLTS U/9's
with their Manager
DAVID LOFTNESS

EVERYDAY, LIGHTING SYSTEMS HAVE TO WORK HARDER AND HARDER AND HARDER AND

It's a fact-an inefficient lighting system is one of the most common and most expensive forms of energy wastage. Lamps deteriorate, lighting levels fall. In real terms, less light for more money.

To solve this continuing problem Parkersell (Lighting and Electrical) Services can provide the answer through Energy Audits, Lighting Retrofit, and Planned Lighting Maintenance Programmes. All designed to get the best out of your investment. Contact us today and save in our expertise and experience and save money.

**CONTACT NIGEL WOODGATE
ON**

0376 519925

**164 Enterprize Court,
Eastways Industrial Estate
Witham
Essex CM8 3YQ**

parkersell



FULL KIT
Richardsons
Cycles of Leigh
 Tel: 713847



Sussex
 in
 Essex
 seeks
 support

SPONSOR *kit*



FULL KIT
 Ted
 Parsons



*No Prior
 arrangement
 yet made*



"Fran the Span"
 needs
 amigo



FULL KIT
 Bay Guest
 House
 Tel: 588415



*Mark
 wants
 friend to
 plant his
 Roots*



*Flank-
 man
 seeks
 funder*



Socks:
 Alex, "Jive" &
 Darren
 c/o SUFC Ticket
 Office



Socks:
 Amanda & Maria
 Kitteridge &
 Emma



FULL KIT
 Hazel
 Parsons



Shirt:
 Tina
 Martin



*All over
 Bar(ham)
 a
 sponsor*



Socks: Dave
 Burgess



FULL KIT
 Mick Porter
 Tasmania
 Australia



*Cathedral
 cleric
 seeking
 collection*



FULL KIT
 Southend Postman
 (200 Club)



*This
 "Corn"
 needs
 support to
 be "Well"*



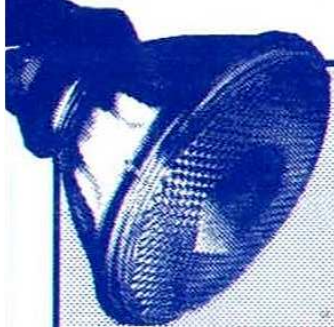
*Potato King
 searching
 for
 Courtiers*



FULL KIT
 Blues Supporters
 Club



Socks: Marion
 & Chris Cave
 Shirt & Shorts:
 Bernard Wells



Spot Light On ...

Pat Scully

Once a "Gunner" but now very positively a "Blue", Irish Under 21 International Pat Scully has made himself both a firm favourite and virtual automatic choice since his arrival last season following a loan spell. It depends on your outlook as to whether Blues signed Pat to clinch promotion from Division Three or to ensure they were prepared for Division Two. Whichever way you view it the big boyo with the dark Celtic look's has paid off handsomely.

Talking to Pat these days you're likely to get more news of the Driving Test than anything else - he's just passed his, despite advice from Peter Butler! He's also responsible for Blues fans taking to the unlikely, for a Southern English based side, "Wild Rover" as an anthem. His rendition along with Peter Butler's at the presentation of Supporters Awards last season end will remain long in the memory of those unfortunate enough to hear it.



Pat Scully - strong at the back

Photo: David Montier

All this is by way of saying that the "Big Fella" has, in a short time become a very popular player at Roots Hall.

However his popularity owes, as it should, even more to his performances on the pitch than his friendly attitude off it. Indeed on the pitch his aspect is all together different to that in social circles. He's quietly aggressive, solidly composed and treats opposing forwards with stern attention. Indeed, there's very little "Wild" (Bury apart last season perhaps) or "Roving" about his play - and Blues are grateful for that. He's brought solid and unspectacular professionalism to Blues back four and forged a fine relationship with Spencer Prior in the spine of the defence.

Possibly because he came from Highbury many forget that he is a very young man too like his three back four colleagues. It's testimony to him, that they look to him as the provider of experience.

He has good days and excellent days but so far very few off days and in the responsibility of his position, consistency is a vital factor. He's shown he has the pedigree to compete against the best and like his colleagues at the back has plenty of time to learn even more of his trade and build on an already sound playing record. For certain Blues fans are pleased he's a Blue and they won't want him Rolling at all.

MEET THE REF

NAME: A. Smith

LIVES IN: Rubery Nr. Birmingham

OCCUPATION: Engineer

REFEREE CAREER TO DATE:

Commenced via the local Bromsgrove League and then middle of the Midland Combination, to the West Midland League. Promoted to the line of the Football League 1982 and Panel Middle season 1985, promoted to the Football League Middle 1989.

FIRST APPOINTED:

Referees List 1989

Linesmens List 1982

IMPORTANT MATCHES:

Referee

1982 - Worcestershire Senior Cup Final

Linesman

1983/4 - F.A. Youth Final Second Leg

Stoke City v Everton

1985 - F.A. Youth, Cup Quarter Final

Everton v Ipswich

1988 - F.A. Cup Quarter Final Luton

Town v Portsmouth.

1989 - Littlewoods Cup Semi-Final

Second Leg Luton Town v West Ham

1989 - F.A. Cup Final Everton v Liverpool



SUPREME COACHES

EST. 1924

**UK & CONTINENTAL
COACH CHARTER SPECIALISTS**



**Top Luxury Executive Coaches
& Brand New "EOS Supercoaches"**
(53 Reclining Seats & Toilet Facilities)

SOUTHEND
(0702) 552995

FAX (0702) 554236 TELEX: 995966



Billy Blue's Bulletin



FOR THE RECORD

DIV TWO: Highest Gate: 22,700 Newcastle United v Watford. Lowest Gate: 3,726 Oxford United v Plymouth Argyle. Best Average: 4,627 Oxford United. Goal Power Swindon Town 30 (2.3 goals/game). Top Stoppers: Middlesbrough (11 goals in 15 games). Best home record: Middlesbrough (8 games 22 points). Best Away Record: Cambridge United (6 games 12 points).

Soccerline

0839 66 44 44

LIVE ITV ACTION

I.T.V. have selected the following Barclays League games for exclusive live coverage on "The Match".
Sunday 17th November - West Ham v Liverpool (k.o. 2.55pm)
Sunday 24th November - Aston Villa v Leeds United (k.o. 2.55pm)
Sunday 1st December - Arsenal v Tottenham Hotspur (k.o. 2.55pm)
Wednesday 18th December - Tottenham Hotspur v Liverpool (k.o. 8.05pm)

LEADING SCORERS - DIVISION 2

	BI	R	Fa	O	T
Aldridge - Tranmere R	7	8	-	6	21
Shearer - Swindon Tn	10	5	-	2	11
White - Swindon Tn	6	3	-	2	11
Wilkinson - Middlesbrough	7	2	-	-	10
Bull - Wolves	7	3	-	1	9
Boyle - Port Vale	5	3	-	-	8
Dublin - Cambridge U	6	2	-	3	8
Quinn - Newcastle U	5	-	-	3	8
Peacock - Newcastle U	3	3	-	-	8
Speedie - Blackburn R	8	-	-	-	8
Steel - Tranmere R	3	3	-	2	8

Infobline

0839 66 44 43

VIC GOES OFF WITH A BANG

A hair-raising trip for Blues Chairman, Vic Jobson was rewarded by a point at Middlesbrough last Saturday. Vic set off from Southend to Stevenage to catch a train North. Delayed, he missed it, pursued it to Peterborough missed it again and drove up all the way only to burst a tyre 7 miles south of M'Bro. A quick change and he made it just as we kicked off. After the match he livened up the 300 mile trip by appearing on 'Danny Baker's Phone-Chairmaning!' In Programme on Radio Five. All in a day's work!

USE YOUR CLUB

Members are reminded that the new Club facility on the West Bank is, in addition to match-days also open every evening from 7pm - 11pm. If you fancy a drink and a chat in warm surroundings use YOUR club and get full benefit from the facility.
The club is also open from 12 - 3.00pm on Saturdays and Sunday lunch times.

WHAT'S THE PITCH SIZE

Areas of playing surfaces in the Football League Division Two:

1. Charlton Athletic 112yd x 73yd
2. Derby County 110yd x 71yd
3. Grimsby Town 111yd x 74yd
4. Ipswich Town 112yd x 72yd
5. Leicester City 110yd x 76yd
6. Middlesbrough 114yd x 76yd

ON YOUR OWN?

gloom



NEED A HOLIDAY?

YES - THEN WHY NOT JOIN OUR CLUB?

Lonely holidays are a thing of the past. when you join the TRAVEL CLUB.

No more:

Sitting at a table by yourself
Reading a book all alone.

WHAT DO WE OFFER?

Lots of fun in the company of like-minded people of all ages.

In our brochure there are holidays and week-ends abroad in the U.K. To find out all about our Club ...

Phone Tricia on 0702 610281

W.R. WILLIAMS TRAVEL

140 EASTERN ESPLANADE

SOUTHEND-ON-SEA

ESSEX SS1 2YH

SUPPORTERS CLUB and BLUES ON TOUR NEWS

SUPPORTERS CLUB

Hello to every one from the City Ground and all the Blues fans. I'm sure we hope it's a game with all the skill, flare and vision that's associated with the name of Swindon's player/manager, Glen Hoddle.

If all has gone well with the organisation, the two respective supporters clubs have played against each other this morning. We have so far played four matches against Second Division supporters clubs, two home and two away. The two away results were 3-2, Ipswich against and Port Vale in our favour. Both our home games were lost, 2-0 against Millwall and a 14-1 hammering from Charlton. We are always looking for new players, so if any of you out there are budding footballers and would like to play under the supporters club banner please contact Tony Walters on 548692 or myself on 432833.

Last of all we raised £100 for the Royal Marsden Cancer Fund which was the charity nominated by Ladbrokes, who were the main sponsors for the evening. We also donated £30 to the Southend Scouts Movement for the loan of their video. Once again a big thanks to everyone who supported the event and I hope they enjoyed themselves. Enjoy the match, all the best.

Chris Avis

BLUES ON TOUR

Blues on Tour are taking bookings for the away match at SUNDERLAND. We will be leaving Roots Hall at 6.30am. The prices will be £14 for members, £16 for non-members and £12 for concessions.

At the time of writing NEWCASTLE UNITED will be played on Wednesday 20th November. This depends on Newcastle's continuous involvement in the Rumbelows Cup. The prices are the same as for Sunderland. We will be leaving Roots Hall at 11am.

Bookings can be made by phoning Simon on 0702 297218.

Recently we have had a spate of people booking late when we are already fully booked. Could you please book at least 3 days in advance so we can arrange any additional coaches.



**Mulberry
Restaurant**

Open to Non-Residents
Excellent View across the Estuary
phone (0702) 586375
THORPE ESPLANADE THORPE BAY ESSEX

- All rooms with Private Bathroom or Shower, Telephones, Colour Televisions, Tea & Coffee making facilities
- Use of local sports centre for Squash, Tennis, Swimming Pool, etc.
- Full Central Heating ● Large Car Park
- Weddings and Dinner Parties
- Continental Terrace ● Conference & Small Exhibition Room





Blues back in time

Friday 16th March 1979
Football League Division Three
Southend Utd. 5 - Swindon T. 3

Recalled by Kevin O'Donnell

The winter of 1978-79 was particularly severe resulting in a large number of postponed matches - Blues did not play any Football League matches at all during January. To save printing costs on new programmes for rearranged games the club took to adding the words "or when played" under the date.

Although the lay off did not appear to have adversely affected the team's form it did seem to have a negative effect on attendances as only 4,303 fans turned up for an attractive fixture against 5th placed Swindon.

Blues were also handily placed in the table as, unbeaten in their previous six games, they were 9th and not far behind the leaders in terms of points. The match marked the return of Andy Polycarpou to the Blues team who had not played at Roots Hall since an F.A. Cup replay against Watford in December when his goal had earned Blues a home tie against Liverpool.

Polycarpou was only brought into the side because of the poor weather conditions as manager Dave Smith decided not to risk Ron Pountney who was only just recovering from an ankle injury. He certainly justified his selection with probably his best display in a Blues shirt.

After 13 minutes Polycarpou played a neat one two with Micky Stead on the edge of the penalty area and Stead's shot sailed past the helpless Swindon keeper to put Blues 1-0 up.

Seventeen minutes later Stead turned provider as his free kick into the Swindon penalty area was headed on by Derrick Parker. Keeper Allan could only palm the ball out and Polycarpou was on hand to slam the ball into the net.

Blues were now well in control and extended their lead further before half-time. Former Blues defender Andy Ford, under pressure from Polycarpou handled in the penalty area and Colin Morris made no mistake from the resultant spot kick.

The real fireworks were saved for the second half with four goals in a six minute period - two to

each club. The first was the most spectacular as in the 53rd minute as Polycarpou latched onto a Micky Laverick through ball to send in a perfect curling shot from the edge of the area for a simply brilliant goal.

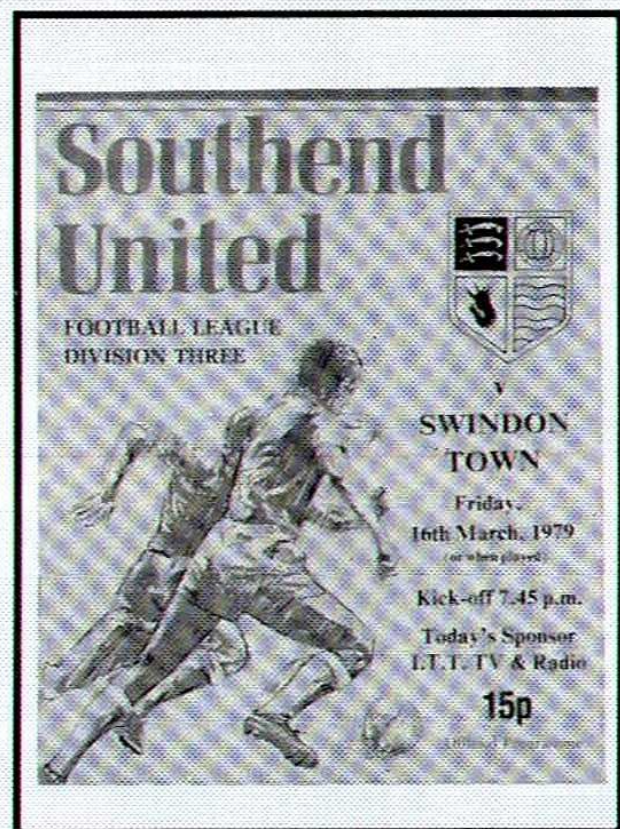
Then in quick succession Ray McHale pulled one back for the visitors, Laverick scored a fifth for Blues and then Alan Mayes scored another for the visitors. However, that was not an end to the scoring as in the 74th minute Mervyn Cawston turned a Chris Kamara corner into his own net.

Blues were happy with the five goals they had scored but not so happy with the three conceded especially as they had led 4-0 and 5-1. The win lifted Blues to 7th but a late season lapse ended their outside promotion hopes.

TEAMS:

BLUES: Cawston, Moody, Yates, Stead, Hadley (Walker), Cusack, Morris, Polycarpou, Parker, Dudley, Laverick.

SWINDON: Allan, Hamilton, Ford, McHale, Aizlewood, Stroud, Miller, Carter, Rowland, Mayes, Kamara.





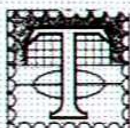
**BARCLAYS
LEAGUE**

FOOTBALL LEAGUE NEWS

		AGGREGATE	GAMES	AVERAGE	+/-%
Division One	90-91	2,610,075	110	23,728	
	91-92	3,315,023	149	22,248	-6.2%
Division Two	90-91	2,041,400	176	11,599	
	91-92	1,614,016	167	9,665	-16.7%
Division Three	90-91	873,153	168	5,197	
	91-92	812,521	155	5,242	+0.9%
Division Four	90-91	535,346	166	3,225	
	91-92	443,210	142	3,121	-3.2%
Total	90-91	6,060,100	620	9,774	
	91-92	6,184,770	613	10,089	

Leeds United's Howard Wilkinson was the Barclays Bank Manager of the Month for October. His Yorkshire side, who won four of their five Barclays League outings during the month, went to the top of the First Division table for the first time in seventeen years. Howard Wilkinson will receive an inscribed plate, a jeroboam of champagne and a cheque for £250.00

Divisional awards went to Alan Curbishley and Steve Gritt (Charlton Athletic), with four wins and two draws from six Barclays League games and to Terry Cooper, whose Birmingham City side not only knocked out Luton Town and drew with Crystal Palace in the Rumbelows League Cup, but also took over at the top of the Third Division. The Fourth Division award went to Mansfield Town's Player Manager George Foster, whose side won all four of their Barclays League games during October. The Barclays Bank Managers' Awards are chosen by a panel of leading football writers and commentators in conjunction with The Football League.



The Football Trust has been created to help football at all levels and especially to meet the requirements of Lord Justice Taylor's Final Report.



Annual income is expected to exceed £32 Million - £20 Million as a result of the reduction in Pool Betting Duty and the continuing contribution of over £12 Million annually from the Spotting-the-Ball competition organised by Littlewoods, Vernons & Zettors.



THE FOOTBALL TRUST
Helping the game



BUXTON'S COLUMN

This afternoon we welcome Swindon Town to the verdant grasslands of Roots Hall.

With Blues after so many years of trying having achieved the dizzy heights of Division Two I'm sure all of us have sympathy for the Swindon devotee who saw his side win promotion on merit to the First Division not so long ago only to see it cruelly whipped away for actions that did not happen on the field. What agony that must have been for the Swindon faithful after so many years of cheering and hoping. I saw Swindon in action at Newcastle United last Boxing Day. In many ways it was a typical 2nd Division match as Swindon played Newcastle off St. James's Park for 75 minutes and then saw themselves hanging on desperately for the one all draw.

Swindon can certainly play as John Cornwell, brought to Southend from the Wiltshire club knows only too well and they also include in their ranks the former Southend winger Martin Ling.

It's also hopefully a chance for us to enjoy the tantalising skills of their player/manager Glen Hoddle, now operating in a sweeper role. Glen, who comes from

Harlow, back playing again after it seemed a knee injury while starring for Monte Carlo had ended his playing days. A superbly creative player I'm sure it's a mystery and disappointment both to him and us that he wasn't called upon nearly enough by his country when he was at the height of his career ... perhaps one of the reasons for that is that managers aren't fans.

I for one certainly hope the former Spurs superstar will be playing at Roots Hall.

Hoddle is one of the "over 30" brigade gracing league football. Back in the good old days players who reached the "evergreen" stage of their career used to drop down a division or two to delight new audiences and help the youngsters of lesser teams develop their skills.

These days though it doesn't seem to happen as the senior players just go on playing at the senior level. Hoddle, Gordon Strachan, Bryan Robson and Peter Reid come easily to mind.

At West Ham Trevor Brooking, Billy Bonds and Liam Brady played on into the twilight years.

It reminds me that Southend had such a man in Eddie Clayton who after a distinguished career with Tottenham was signed by Earnie Shepherd. And it was Clayton who inspired Southend to one of their best F.A. Cup results. In the 4th round in 1970 we went to Swindon Town and won. It was the time when Don Rogers was the Swindon superstar and the year they won the League Cup at Wembley. During the week leading up to the cup tie Rogers was quoted in the National press as saying "Nobody comes to Swindon and wins" but we did ... 2-0.

I'd be quite happy with another 2-0 win for Southend today.

Up the Blues!

HARLAND TYRES LTD.

New Tyre Distributors, Manufacturers of Mastertread Tyres

RETAIL DEPOT:

1307 London Road, Leigh-on-Sea, Essex, SS9 2AD. Telephone: (0702) 77072

FACTORY:

60 Progress Road, Eastwood Industrial Estate, Leigh-on-Sea, Essex, SS9 5JT. Telephone: (0702) 527483/4



COMINGS AND GOINGS

COMING TO ROOTS HALL NEXT BARNSELEY - Saturday November 23rd K.o. 3.00pm

Mel Machin, once of Norwich now of Oakwell brings down "The Tykes" for what is sure to be a tough match. Barnsley started badly but they've picked up form of late and seem certain to be a difficult nut to crack.

BRIGHTON - Saturday 7th December K.o. 3.00pm

A real "seasiders" battle as Brighton come to Roots Hall. We had some good battles with the Seagulls in Division Three and the Cups in the 1980's and it would be great to beat them in our first meeting at the higher level.

GOING AWAY - SUNDERLAND - Saturday 30th November K.o. 3.00pm



Travel along the A127 to the M25. Take the A1(M) to the A690 which leads to A183 Roker. Follow the A183 to find the ground, which is just off Fulwel Road.



Leaving from Kings cross the 11.00am Changes at Newcastle and arrives at Sunderland at 2.20pm.
Return: Leaving Sunderland at 6.00pm changes at Newcastle arrives at Kings Cross at 9.54pm. Connection to Liverpool Street 10.25pm.
Return price £52.00



Bookings are now being taken for Sunderland.
Telephone Simon on 297218 or office 435602
Members £14.00 OAP/Junior Members £12.00. Non-Members £16.00
Coaches leave Roots Hall at 6.30am Don't be late folks!!

You'll find all the answers, and so much more, in *the News of the World Football Annual 1991-92*.

It's just out - 432 pages of pure football packed into a book that fits into your pocket. Price: £3.75.

MENS



11 WEST ROAD WESTCLIFF OPPOSITE PALACE THEATRE



WOMEN



NOW STOCKING MORE LADIES WEAR INCLUDING LYCRA

Collecting Football Programmes

Part 11 of a series

WHAT TO COLLECT - CLUB ISSUES

By far the most popular of collecting categories is that which concentrates on a favourite club. At its most basic, this can encompass home first team programmes only; to which may be added away match programmes; those from reserve and youth team games (home and/or away); and friendly matches - all within a variety of time spans. You could collect current issues only; or those back to 1980; 1970; 1960; 1950, post-war or all times. Each level has its own costs and degree of difficulty in obtaining issues.

Generally, 90% of all programmes issued over the past 25 years may be obtained with little difficulty, at cover prices, from club shops, programme fairs and dealers catalogues. Reserve and youth team programmes from friendly or cup matches played abroad may prove in some instances to be difficult to obtain, and there will inevitably be the odd domestic league or cup match which had a particularly low print run (compared with attendance) which will result in a much-sought after programme.

Those for the early 60's may be fairly readily available from dealers catalogues, particularly from local traders who are more likely to carry larger stocks of local clubs, at prices around the 50p level. Slightly more difficult are those for the late 50's, at prices around £1.

Programmes from around 1955 and before can fall into one of two categories - more expensive to buy at around £2, or much sought after and the subject of offers only. It is harder to evaluate the price of programmes which find themselves onto dealers' 'Offers Lists', particularly those involving popular clubs whose programmes are generally in demand. However the minimum offer quoted by the dealer is often a reasonable guide to the level at which bidding should start.

Pre-war and war-time, plus those for the reconstruction seasons immediately after the Second World War, are invariably subject to offers and some of them can be very expensive indeed.

* PROGRAMME MONTHLY IS AVAILABLE FROM
14 RAITH CRESCENT, KIRKCALDY, FIFE KY2 5NN
PRICED £1.30 PLUS 30P POSTAGE.

NEPTUNES Restaurant

40 Marine Parade
Southend on Sea

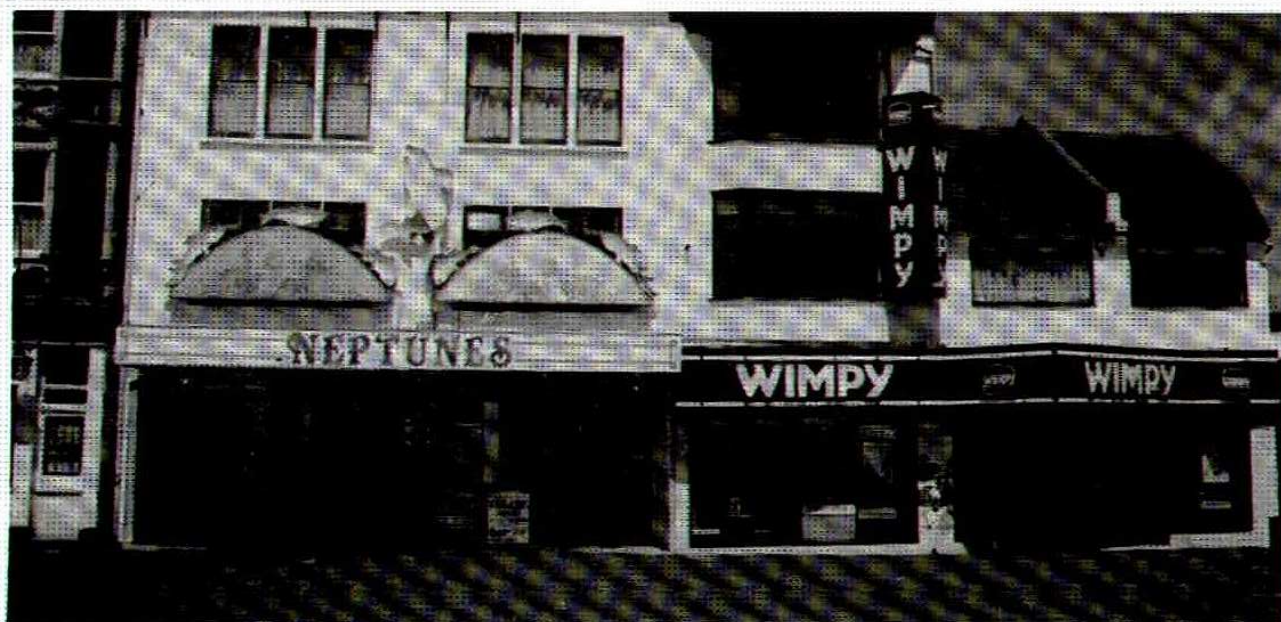
Tel: 464466

- No One Is Perfect, But We Are
Nearer Than Others -

THE WIMPY

41/42 Marine Parade
Southend on Sea

Tel: 464466





Potted Shrimps

THEY PLAYED FOR US AND THEM

Defender HARRY MAY moved to Swindon from Cardiff in 1950 after just one first team game for the Welsh club. He played regularly in Division Three south in 1950/1/2 and then moved on to Barnsley and helped them to the Third Division (North) Championship in 1954/5. After a dispute over wages he came to us in the summer of 1955 and in his one season with us played in 19 games and scored one goal.

Several players served both ourselves and Swindon in the seventies. Defender ANDY FORD had been with Bournemouth without breaking through into the first team when he came here in the summer of 1973. He had four good seasons in our back line and by the time he moved to Swindon in August 1977 he had totted up 138 games and had scored three goals. He then played almost a hundred games for them in the next three seasons in Division Three and then spent two seasons with Gillingham in 1980/1/2.

Scotsman DAVID CUNNINGHAM was here at the same time as Andy, having come from Brechin City in 1973. He played 60 games, mainly in a wide role up front during the next four seasons, scoring four goals and then moving on loan to Hartlepool in May 1977. Just three months later he moved to Swindon and played 23 games for them in the next season and a half before moving to Peterborough on loan. Then it was on to Aston Villa for the second half of 1978/9 and his last Football League appearances were with Hereford in 1979/80.

Striker CHRIS GUTHRIE had played just three games for Newcastle when he came here in November 1972. In the next two and a half seasons he scored 35 goals in 108 games, then had two seasons with Sheffield United and landed up at Swindon in the summer of 1977. In just over a season he netted 12 goals in 45 games and then moved on to spend nearly two seasons with Fulham and a few weeks with Millwall.

STAR VISITOR

DUNCAN SHEARER Everybody loves a goalscorer, unless of course he happens to be playing against one's own particular team and Duncan Shearer is currently very popular with Swindon fans after a tremendous start to this season.

Born in Fort William in 1966, he played for Clachnacuddin before signing for Chelsea in November 1983. Soon he was scoring regularly in the reserve team, but with Kerry Dixon and David Speedie holding down the first team strikers' roles he played only two first team games against Leicester and Oxford in Division One in February 1986.

In quest of first team football therefore he moved to Huddersfield a month later and in his first full game he netted a hat-trick at Barnsley and followed up with two goals against Stoke just five days later. He played in every game in 1986/7, chalking up 24 goals and then in 1987/8 despite missing several games through injury he still managed another 16, including an FA Cup hat-trick against Rotherham.

He cost Swindon £250,000 in the summer of 1988 and though it took him seven games to open his scoring account he had clocked up 15 goals by the end of his first season at the County Ground. He was a major factor in his side's 1989/90 campaign when they won through to promotion to Division One via the playoffs only to miss out because of alleged irregularities behind the scenes. His tally for that season was 27 and even in the rather anticlimactic 1990/1 he got another 23.

He kicked off this season with a goal at Cambridge in the first away match and it has been on opponents' grounds that he has been most lethal with four goals at Plymouth, and two each at West Brom, Brighton and Huddersfield, his former club, the latter being in the Rumbelows Cup to earn his side a home tie with either Birmingham or Crystal Palace.

To date his goal tally is 16 this season to take his career tally to 131 in just over 260 games, a quite remarkable striking rate in the modern game. He really is a natural goalscorer.

IT'S ALL IN THE PAST

RESULTS OF PAST MATCHES BETWEEN BLUES AND SWINDON TOWN

SEASON	DIV.	HOME	AWAY
1946-47	3(s)	2-0	1-2
1947-48	3(s)	1-0	0-0
1948-49	3(s)	3-4	1-2
1949-50	3(s)	2-0	2-2
1950-51	3(s)	8-2	1-4
1951-52	3(s)	2-2	0-1
1952-53	3(s)	3-0	3-1
1953-54	3(s)	3-1	0-3
1954-55	3(s)	4-1	1-0
1955-56	3(s)	0-0	1-1
1956-57	3(s)	1-0	2-3
1957-58	3(s)	2-3	1-2
1958-59	3	0-2	1-2
1959-60	3	1-3	0-2
1960-61	3	0-2	1-1
1961-62	3	0-2	0-0
1962-63	3	1-1	1-4
1965-66	3	4-2	0-4
1974-75	3	2-0	0-2
1975-76	3	3-0	0-0
1978-79	3	5-3	0-1
1979-80	3	1-0	0-1
1981-82	3	0-0	0-0
1984-85	4	3-2	0-2
1985-86	4	0-0	1-2

F.A. CUP

1950-51 First Round Blues 0 Swindon 3

1968-69 Third Round Swindon 0 Blues 2

League Cup

1963-64 Third Round Swindon 3 Blues 0

THE LAST TIME WE MET:-

12th January 1986

League Division Four

Swindon Town (1) 2 Southend United (1) 1

Gordon (pen), Ramsey Westley

Attendance: 7,619

TEAMS:

SWINDON:

Allen, Ramsey, Roberts, Barnard, Cole, Calderwood, Bamber, Henry, Gordon, Wade, Hockaday.

SOUTHEND:

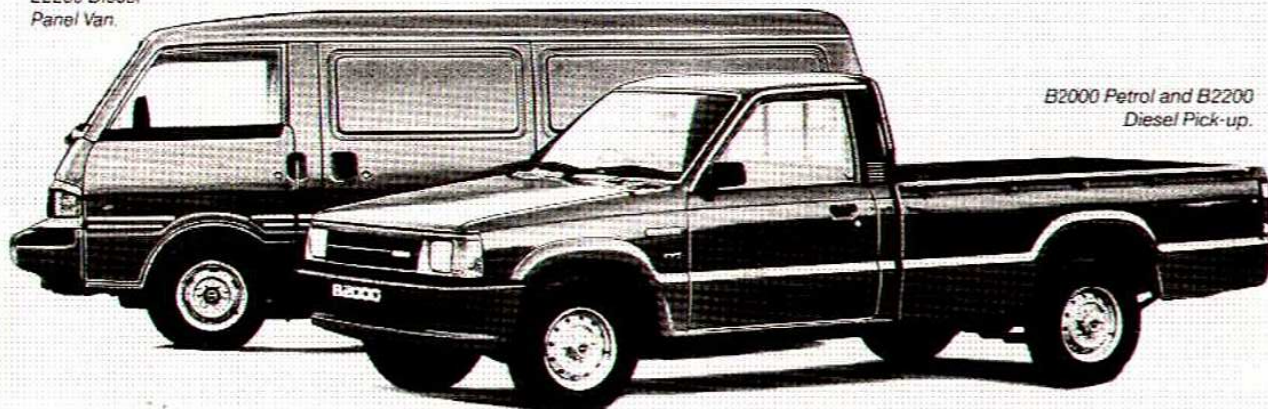
Stannard, May, Lampard, Lock, Westley, Hatter, Clark, Stebbing, Cadette, McDonough, Gymer.

BOTTOM OF THE LIST.

PETROL	RETAIL PRICE EXCLUDING VAT	DIESEL	RETAIL PRICE EXCLUDING VAT
FORD Transit 120S.....	£9,960	FORD Transit 120S.....	£11,570
TOYOTA Hiace.....	£9,147	TOYOTA Hiace.....	£10,038
BEDFORD Midi Std. LWB....	£9,250	BEDFORD Midi Std. LWB..	£10,260
NISSAN Urvan.....	£8,400	NISSAN Urvan.....	£9,395
MAZDA E2000.....	£8,389	MAZDA E2200.....	£9,269

TOP OF YOURS.

E2000 Petrol and
E2200 Diesel
Panel Van.



B2000 Petrol and B2200
Diesel Pick-up.

The Mazda commercial vehicle range is unbeatable.

Compare purchase price, levels of specification, payload, and resale values – you just can't beat a Mazda.

And right now we're offering amazing summer deals and even better value for money.

We'll also offer 0% finance over twelve months with a 50% deposit, 7% (13.7% APR) over 36 months with a



30% deposit or an even longer repayment period with a lower deposit to help spread the load further still.*

In addition Mazda's three year/60,000 mile warranty and legendary reliability will keep your business going for years and years.

But don't take our word for it. Come and see the range for yourself, then take a look at the competition.

Commonsense will decide.

*Finance arranged subject to status through MCL Finance Limited. This offer applies to all new light commercial vehicles

Information correct as at July 23rd 1991.

**WESTLEIGH MOTORS
LEIGH-ON-SEA**

1355-1369 LONDON ROAD

(0702) 72277

mazda
Building Excitement



Blues Bygone Days



**YEARS
30
AGO**

We disappointed our fans when going down 3-1 at home to Northampton on November 18th 1961 with Jimmy Fryatt pulling back a consolation goal in the second half after Cliff Holton, Ron Spelman and Pat Terry had given the Cobblers a comfortable lead.

Teams:

SOUTHEND: Goy, Watson, Anderson, Costello, Brand, Dicks, Bentley, Corthine, Fryatt, Kerrins, Kellard.

NORTHAMPTON: Brodie, Foley, Claypole, Everitt, Branston, Leck, Spelman, Holton, Terry, Reid, Lines.

Meanwhile Swindon who were alongside us just above the bottom two in Division Three lost 3-2 at Peterborough with Peter Chamberlain and Earnie Hunt (pen) on the mark, their team at that time also including future England man Mike Summerbee on the right wing.

Bournemouth moved further ahead of Portsmouth at the top by dint of a 2-2 draw at Brentford while in Division Two Liverpool moved further ahead of Scunthorpe at the top with a Roger Hunt matchwinner at Derby. In Division One Everton beat Blackburn 1-0 and moved to within a point of leaders Burnley, who dropped a point in a 3-3 draw with Wolves.

**YEARS
20
AGO**

November 19th 1971 was one of the big days in our history as not only did we have the 'plum' draw with a visit from Aston Villa (then in Division Three) in the first round of the FA Cup, but we beat them 1-0, roared on by 16,929 (We wonder how many came from Birmingham!) fans, in a season in which we were regularly attracting 5-figure gates. Billy Best got our match winner and the teams were:

SOUTHEND: Roberts, Smith, Ternent, Elliott, Albeson, Jacques, Johnson Best, Garner, Moore, Lewis.

ASTON VILLA: Hughes, Bradley, Aitken, Vowden, Curtis, Turnbull, Graydon, Gibson (Tyler), Lochhead, Hamilton Anderson.

This earned us a second round tie at Bournemouth who were, like Villa, challenging for promotion from Division Three at a time when we were amongst the front runners in Division Four. It was perhaps something of an omen that Bournemouth won their first round tie 11-0 against Margate with Ted MacDougall getting nine of them including a penalty. There were two giantkilling acts by non-league teams, Wigan beating Halifax 2-1 at a time when the former were still in the Football Alliance and Blyth Spartans winning 1-0 at Crewe.

Swindon, who were then in Division Two, drew 1-1 with Preston, whose defender John Bird (recently sacked as manager of York) landed the ball in his own net. Those were the days of player-manager Dave MacKay and strikers Arthur Horsfield and Don Rogers.

**YEARS
10
AGO**

We were again involved in the first round of the F.A. Cup on November 21st 1981, but this time we went down 3-1 at Hereford with Terry Gray getting our solitary reply to goals from Jimmy Harvey, Joe Laidlaw and Stewart Phillips, the teams being:

HEREFORD: Brand, Price, Bray, Hicks, Dobson (Lane), Spiring, Harvey, Laidlaw, Philips, Showers, White.

SOUTHEND: Keeley, Stead, Yates, Pennyfather, Moody, Walker, Gray, Pountney, Spence, Mercer (Greaves), Nelson.

ATTENDANCE: 3,527

Swindon, who were five points below us at the time, squeezed a 2-1 win over Taunton Town in a game that was originally drawn at Taunton but then moved to Swindon 4,494 saw Howard Pritchard get a goal in each half for the Robins.

Shock results included Penrith's 1-0 win over Chester, and Altrincham's 2-2 draw at Sheffield United, which they followed up with a 3-0 win at Altrincham in the replay. Runcorn also did very well to draw at Burnley, but then lost the replay 2-1. Meanwhile in Division One leaders Manchester United went down 3-1 at Tottenham, this being only their second defeat of the season and Manchester City were now just four points behind their neighbours after hammering fourth place Swansea 4-0.

**CAPITAL
FOOTBALL
LEAGUE**

Up to and including Wednesday 30th October 1991

	P	W	D	L	F	A	Pts
Barnet	9	5	2	2	28	14	17
Wycombe Wanderers	7	4	1	2	11	6	13
Crystal Palace	6	3	2	1	15	9	11
Cambridge United	5	3	2	0	8	4	11
Southend United	6	3	1	2	15	10	10
Leyton Orient	6	3	0	3	14	9	9
Brentford	4	2	1	1	8	5	7
Sutton United	5	2	1	2	7	7	7
Wealdstone	5	1	2	2	6	11	5
Colchester United	4	1	1	2	3	9	4
Wokingham Town	7	1	1	5	10	28	4
Slough Town	5	1	0	4	8	15	3
Aldershot	5	0	2	3	4	10	2

RECENT RESULTS

Barnet 2 Southend United 1

Barnet 5 Wealdstone 0

Sutton United 0 Crystal Palace 1

Wokingham Town 0 Leyton Orient 6

Wycombe Wanderers 3 Slough Town 1

BLUES TATS FILE - SEASON 1991/92

DATE	OPPONENT	ATT	RES	PTS	POS	1	2	3	4	5	6	7	8	9	10	11	12	14
17 AUG	BRISTOL CITY	6,720	1-1	1	15th	SANSOME	AUSTIN	POWELL	MARTIN	EDWARDS	PRIOR	ANSAH	SUSSEX	O'CALLAGHAN	BENJAMIN (1)	ANGELL	TILSON	LOCKE
20 AUG	Watford (Rumb. Cup 1(I))	6,231	0-2	-	-	SANSOME	AUSTIN	POWELL	MARTIN	EDWARDS	PRIOR	ANSAH	SUSSEX(1)	O'CALLAGHAN	BENJAMIN	ANGELL	TILSON	LOCKE
24 AUG	Derby County	12,284	2-1	4	9th	SANSOME	AUSTIN	POWELL	MARTIN	EDWARDS	PRIOR	ANSAH	SUSSEX	TILSON	BENJAMIN	ANGELL(1)	ANSAH	CORNWELL
28 AUG	WATFORD (Rumb. Cup 2 (I))	3,806	1-1	-	-	SANSOME	AUSTIN	POWELL	MARTIN	SCULLY	PRIOR	LOCKE	SUSSEX	TILSON	BENJAMIN	ANGELL	SUSSEX	EDWARDS
31 AUG	LEICESTER CITY	6,994	1-2	4	15th	SANSOME	AUSTIN	POWELL	MARTIN(1)	SCULLY	PRIOR	ANSAH	LOCKE	TILSON	BENJAMIN	ANGELL	LOCKE	SUSSEX
3 SEPT	CAMBRIDGE UNITED	6,142	1-0	7	10th	SANSOME	AUSTIN	POWELL	MARTIN	SCULLY	PRIOR	ANSAH	CORNWELL	TILSON	BENJAMIN(1)	ANGELL	LOCKE	SUSSEX
7 SEPT	IPSWICH TOWN	12,722	0-1	7	15th	SANSOME	AUSTIN	POWELL	MARTIN	SCULLY	PRIOR	ANSAH	CORNWELL	TILSON	BENJAMIN	ANGELL	O'CALLAGHAN	SUSSEX
14 SEPT	BRISTOL ROVERS	4,872	2-0	10	10th	SANSOME	AUSTIN	POWELL	SUSSEX	SCULLY	PRIOR	ANSAH(1)	CORNWELL	TILSON	BENJAMIN	ANGELL(1)	HALL	EDWARDS
17 SEPT	PLYMOUTH ARGYLE	4,585	2-1	13	5th	SANSOME	AUSTIN	POWELL	SUSSEX	SCULLY	PRIOR	ANSAH	CORNWELL	TILSON	BENJAMIN(1)	ANGELL(1)	HALL	EDWARDS
21 SEPT	PORT VALE	5,988	0-0	14	7th	SANSOME	AUSTIN	POWELL	SUSSEX	SCULLY	PRIOR	ANSAH	CORNWELL	TILSON	BENJAMIN	ANGELL	HALL	EDWARDS
28 SEPT	WOLVERHAMPTON WAND.	8,368	0-2	14	10TH	SANSOME	AUSTIN	POWELL	SUSSEX	SCULLY	PRIOR	HALL	CORNWELL	TILSON	BENJAMIN	ANGELL	LOCKE	CAGGIAO
2 OCT	WATFORD F.C. (Z. D. C.)	1,700	1-0	-	-	SANSOME	AUSTIN	POWELL	SUSSEX(1)	SCULLY	PRIOR	LOCKE	CORNWELL	TILSON	BENJAMIN	CAGGIAO	O'CALLAGHAN	HALL
4 OCT	Tranmere Rovers	7,368	1-1	15	12th	SANSOME	AUSTIN	POWELL	SUSSEX	SCULLY	PRIOR	LOCKE	CORNWELL	TILSON	BENJAMIN	ANGELL(1)	O'CALLAGHAN	HALL
12 OCT	MILLWALL	7,266	2-3	15	14TH	SANSOME	AUSTIN	POWELL	SUSSEX(1)	SCULLY	PRIOR	ANSAH	CORNWELL	TILSON(1)	BENJAMIN	ANGELL	O'CALLAGHAN	LOCKE
19 OCT	Watford	6,862	2-1	18	11th	SANSOME	AUSTIN	POWELL	JONES	SCULLY	PRIOR	ANSAH	CORNWELL	TILSON	BENJAMIN	SUSSEX(1)	ANGELL	HALL
22 OCT	Crystal Palace (ZDS Cup)	7,185	2-4	-	-	SANSOME	AUSTIN	POWELL	JONES(1)	SCULLY	PRIOR	ANSAH	CORNWELL	TILSON	BENJAMIN	ANGELL(1)	LOCKE	HALL
28 OCT	CHARLTON ATHLETIC	7,320	1-1	19	11TH	SANSOME	AUSTIN(1)	POWELL	JONES	SCULLY	PRIOR	ANSAH	CORNWELL	TILSON	BENJAMIN	ANGELL	LOCKE	HALL
30 OCT	OXFORD UNITED	4,873	2-3	19	11TH	SANSOME	AUSTIN	POWELL	JONES	SCULLY	PRIOR	ANSAH	CORNWELL	TILSON(1)	BENJAMIN	ANGELL(1)	EDWARD	HALL
2 Nov	Middlesbrough	9,664	1-1	20	10th	SANSOME	AUSTIN	POWELL	JONES	SCULLY	PRIOR	ANSAH	CORNWELL	TILSON	BENJAMIN	ANGELL(1)	LOCKE	EDWARDS
5 Nov	BLACKBURN ROVERS	4,860	3-0	23	10th	SANSOME	AUSTIN	POWELL	JONES	SCULLY	PRIOR	ANSAH	CORNWELL	TILSON	BENJAMIN(1)	ANGELL(2)	LOCKE	EDWARDS
9 NOV	SWINDON TOWN																	
20 Nov	Newcastle United																	
23 NOV	BARNSELEY																	
30 Nov	Sunderland																	
7 DEC	BRIGHTON & H. A.																	
14 Dec	Portsmouth																	
22 DEC	CAMBRIDGE UNITED																	
28 Dec	Oxford United																	
28 Dec	Leicester City																	
1992																		
1 JAN	NEWCASTLE UNITED																	
11 JAN	DERBY COUNTY																	
18 Jan	Bristol City																	
28 Jan	Gillingham																	
1 FEB	WATFORD																	
8 Feb	Charlton Athletic																	
15 Feb	Barnsley																	
22 FEB	SUNDERLAND																	
29 Feb	Brighton & H. A.																	
7 MAR	PORTSMOUTH																	
10 Mar	Blackburn Rovers																	
14 MAR	MIDDLESBROUGH																	
21 Mar	Swindon Town																	
28 MAR	GRIMSBY TOWN																	
1 Apr	Bristol Rovers																	
4 APR	IPSWICH TOWN																	
11 Apr	Plymouth Argyle																	
15 APR	PORT VALE																	
20 Apr	Wolverhampton Wand.																	
25 APR	TRANMERE ROVERS																	
2 May	Millwall																	



**TODAY'S MASCOTS:
AYRAN & CALLUM
DOWNING**

Today we welcome two brothers as Mascots. They live in Benfleet where 5 year old Ayran has just commenced attending Woodham Ley Infants School in Benfleet. He lists amongst his hobbies, running, drawing and football and although he doesn't play himself yet, his favourite teams are Tottenham Hotspur and of course Southend. His favourite player is Gary Lineker, who one day he hopes to emulate. His brother Callum, who is nearly 3 is making his Roots Hall "debut" today. He enjoys watching football and drawing. His favourite teams are also Spurs and "The Blues". We trust the lads and their family enjoy their day with us. We would like to thank C.K.G. CONTRACTS of Hadleigh for sponsoring Ayran and Callum.

SECOND DIVISION TABLE

	P	W	D	L	Pts	Pts
SWINDON	15	9	3	3	32	17
CAMBRIDGE	15	9	3	3	27	17
MIDDLESBROUGH	17	9	3	5	22	14
CHARLTON	17	8	5	4	22	16
IPSWICH	17	7	7	3	26	23
LEICESTER	16	8	2	6	22	22
DERBY	16	7	4	5	22	16
BLACKBURN	15	7	3	5	19	16
BRISTOL CITY	16	6	6	4	20	21
SOUTHEND	16	6	5	5	21	18
PORTSMOUTH	15	6	5	4	15	14
TRANMERE	15	5	7	3	21	18
SUNDERLAND	16	6	4	6	29	27
PORT VALE	17	5	6	6	19	21
GRIMSBY	15	6	2	7	20	25
BARNSELEY	17	6	2	9	18	25
MILLWALL	16	5	4	7	25	24
WOLVERHAMPTON	16	5	4	6	20	21
WATFORD	16	6	1	9	18	21
BRIGHTON	17	6	3	9	23	28
NEWCASTLE	16	3	6	7	24	30
BRISTOL ROVERS	13	3	5	7	20	26
OXFORD	17	4	1	12	22	32
PLYMOUTH	13	3	3	9	14	29

CHRISTMAS IS COMING....

Having problems thinking of what to buy someone for Christmas?
Then worry no more.

How about a season ticket for The Blues?

SEASON TICKETS MAKE IDEAL GIFTS FOR FAMILY, FRIENDS, WORK COLLEAGUES, ETC. AND ARE NOW AVAILABLE AT UNBEATABLE

EXAMPLES: DISCOUNT PRICES	
WEST STAND	ADULT £101.00
	JUN/OFA £50.00
EAST STAND BLUE	£116.00
EAST STAND YELLOW	£116.00
EAST STAND RED	£128.00
EAST STAND GREEN	£128.00
EAST STAND FAMILY AREA	ADULT £101.00
	JUN/OAF £50.00

These prices include all League Games from the 1st January 1991 to the end of the season. They also give free admission to all Capital League games in the same period, plus, of course, a FREE MEMBERSHIP CARD.

CALL IN, OR RING US AT THE TICKET OFFICE "NOW" ON
0702 435602

MATCH BALL SPONSORS

Nonwich City	6 Aug	C.J. Robinson Carpentry Cont
West Ham Utd.	9 Aug	Toucan Shopfitters
Bristol City	17 Aug	Shelia Mundy
Watford	28 Aug	Pinewood Properties
Leicester City	31 Aug	L. A. Cars
Bristol Rovers	14 Sept	Falcon Freight Inter. Ltd
Plymouth Argyle	18 Sept	Richardsons Cycles of Leigh
Wolverhampton	28 Sept	Leigh Timber Co Ltd
Millwall	12 Oct	Grasshopper (Horticultural) Ltd
Charlton	26 Oct	"90 Minutes"
Oxford United	30 Oct	All Jay Plastics Sheet Sales
Blackburn R.	5 Nov	Barnes Byford & Taylor
Swindon Town	9 Nov	Parkersell Lighting
Barnsley	23 Nov	Lowe & Roger Lichford Davies & Co
Brighton	7 Dec	Par Galvanisers
Cambridge Utd.	22 Dec	Noel C. Kelleway
Newcastle Utd.	1 Jan	The Blues Supporters Club
Derby County	11 Jan	Peter Kingsnorth
Watford	1 Feb	Cooper & Lingard
Sunderland	22 Feb	Rochford Mouldings
Portsmouth	7 March	Peter Kingsnorth
Middlesbrough	14 March	Parkersell Lighting
Grimsey	28 March	Southend Airport
Ipswich	4 April	Rickard Keen & Co
Port Vale	15 April	United Marine & General Salvage
Tranmere	25 April	Ben Jay Auto Sales Ltd



CHRISTMAS IS COMING - CHECK OUT THE BLUES SHOP

Gifts for all the family at prices to suit all pockets

SOCCKERLINE 0839 - 66 - 44 - 44 for views of the Blues and Match Reports
INFOLINE 0839 - 66 - 44 - 43 for news and information

TEAM CHECK

SOUTHEND UNITED

Manager: David Webb

Paul Sansome	- 1 -	Nicky Hammond
Dean Austin	- 2 -	David Kerslake
Chris Powell	- 3 -	Nicky Summerbee
Keith Jones	- 4 -	Tom Jones
Pat Scully	- 5 -	Colin Calderwood
Spencer Prior	- 6 -	Shaun Taylor
Andy Ansah	- 7 -	Micky Hazard
John Cornwell	- 8 -	Duncan Shearer
Steve Tilson	- 9 -	Fitzroy Simpson
Ian Benjamin	- 10 -	Ross MacLaren
Brett Angell	- 11 -	Steve White
Adam Locke	- 12 -	Shaun Close
Andy Edwards	- 14 -	Steve Foley

SWINDON TOWN F.C.

Manager: Glen Hoddle



Match Officials

Referee: Mr. A. W. Smith



Mr. J. F. Thompson
Linesmen: (Red Flag)



Mr. P. A. Vosper
(Yellow Flag)

MITRE
MATCH
BALL
SPONSOR

Parkersell
Lighting

Blues at Home

Barclays League
BARNSELY

Saturday 23rd November
BRIGHTON & HOVE ALBION
Saturday 7th December

Alton's

SIMPLY EVERYTHING
FOR THE GARDEN
ARTERIAL ROAD, WICKFORD, ESSEX
BASILDON 726421